

## Laserglow Product Datasheet

### Hercules Portable Green Laser Module

#### Laserglow Part Number: GHE400XXX



This model is listed as **inactive** in our product database. Stock may be limited, and availability is subject to change without notice.

#### Similar Products:

For information about the other lasers in this product family visit:

<http://www.laserglow.com/GHE>

#### Ordering:

Order Online Now or Request Quote:

<http://www.laserglow.com/GHE400XXX>



#### Series Specifications:

Nominal Wavelength	532 nm
Output Type	CW
Laser Source Type	DPSS

#### Overview:

Laserglow's Hercules Series Portable laser provides unparalleled output power and stability in a portable, battery-operated device. Using a combination of forced-air and thermoelectric cooling the Hercules operates at a 100% duty cycle either on batteries or using an external power supply (sold separately).

Laserglow's Hercules Series green portable lasers are IR filtered for safety and the output power is measured on each unit individually for a 20-minute continuous period to ensure sustained performance. This test is done at least 3 times before the laser is shipped to the customer. The Hercules laser is temperature-tuned to operate ideally at 20°C and will exhibit slightly different output power and stability characteristics under different ambient temperatures.

#### Key Features:

- **Starting at: \$839**
- **Output Power:** 225 mW - 700 mW
- **Pump Diode:** 2.5 Watt
- **Diode Make:** nLight
- **Wavelength:** 532 nm (green)
- **Key Feature:** The most powerful constant-duty portable green laser in the world.
- **Package Includes:** Portable laser, aluminum framed carrying case, instructions/warranty.
- **Class IV lasers also include:** Free laser safety goggles.
- **Safety Info:** Class IIIb/IV
- **Duty Cycle:** 100%

**U.S. Orders:** This laser cannot be shipped to the United States. If you live in the USA you may consider the [532 nm laboratory laser](#), which provides similar output but is not portable. [Click here for more information.](#)

**Canadian Orders:** This laser can be shipped within Canada to Canadian companies who provide the following documentation:

- A valid LSO Certificate with a certified Laser Safety Officer on the premises
- A company purchase order
- A signed Declaration of Use. Please contact our sales department for this form

## Specifications:

This spec sheet has been generated specifically for part number GHE400XXX, per your request, and data for the entire series is also displayed for your reference. The specs which are specific to GHE400XXX have been highlighted below in **red + bold**.

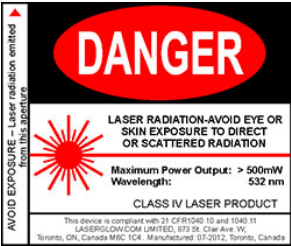
Output Power (mW)	<b>&gt;400</b> , >450
Central Wavelength (nm)	<b>531.65</b>
Divergence (mrad, full angle)	<b>&lt;1.2</b>
Beam Dimensions (mm, 1/e <sup>2</sup> )	<b>1.5</b>
Warm-up Time (minutes)	<b>2</b>
Approximate Peak Power (W)	<b>500</b> , 550
Operating Temperature Range (°C)	<b>15 to 35</b>
Max. TTL Modulation Freq. (Hz)	<b>200</b>
Modulation Input Signal	<b>0-5 VDC</b>
Total Power Consumption (W)	<b>8</b> , 9
Max. Power Input Duty Cycle	<b>100%</b>
Standard Warranty (months)	<b>6</b>
MTTF (operational hours)	<b>5000</b>
Weight of Product or Laser Head (kg)	<b>0.92</b>
Dimensions of Product or Laser Head (mm)	<b>389.4 (l) x 52.7 (d)</b>
Power Supply	<b>3 x D Batteries</b>

CW: All specifications are based on performance at full output power and after the specified warmup period. Output characteristics may change if the laser is run at a different power level.

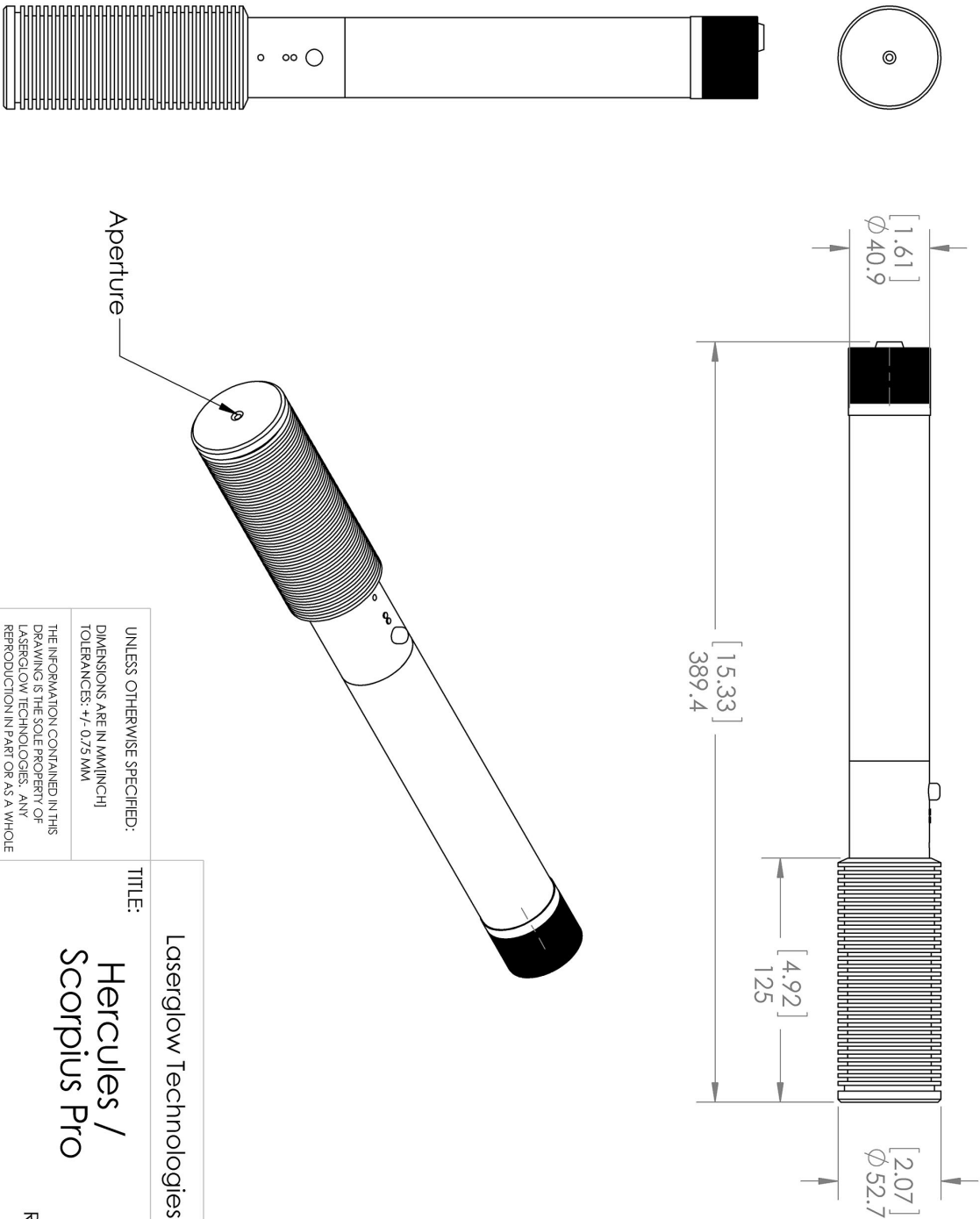
Q-Switched: Specifications are based on the laser pulsing at the specified design frequency. Output characteristics may change if the laser is run at a different frequency.

**Regulatory Classification:**

The model you have selected (GHE400XXX) requires the following safety label(s):










Dimensional Drawing - Laser Form Factor: GHE:



Laserglow Technologies		
TITLE:		
Hercules / Scorpius Pro		
REV 1		
UNLESS OTHERWISE SPECIFIED: DIMENSIONS ARE IN MM(INCH) TOLERANCES: +/- 0.75 MM		
THE INFORMATION CONTAINED IN THIS DRAWING IS THE SOLE PROPERTY OF LASERGLLOW TECHNOLOGIES. ANY REPRODUCTION IN PART OR AS A WHOLE WITHOUT THE WRITTEN PERMISSION OF LASERGLLOW TECHNOLOGIES IS PROHIBITED. © 2012 LASERGLLOW.COM LIMITED. ALL RIGHTS RESERVED		
SCALE: 1:3		SHEET 1 OF 1

## Accessories:

The most popular accessories for model GHE400XXX are shown below. For additional details regarding these or other accessories please see our website or contact us directly.

Part Number	Description	
 AGM00HXXX	Hercules GlowMount Tripod Adaptor Full Details: <a href="http://www.laserglow.com/AGM">www.laserglow.com/AGM</a>	
 AGS5327XX	LSG-532-NS-7 Sport Laser Safety Goggles 532nm Output: OD 7+ at 190-532 nm CE Certified Full Details: <a href="http://www.laserglow.com/AGS">www.laserglow.com/AGS</a>	
 ADR00HXXX	X10DR-Hercules 532nm Expansion: 10x Full Details: <a href="http://www.laserglow.com/ADR">www.laserglow.com/ADR</a>	
 AGF5327XX	LSG-532-NF-7 Fit-Over Safety Goggles 532nm Output: OD 7+ at 190-532 nm CE Certified Full Details: <a href="http://www.laserglow.com/AGF">www.laserglow.com/AGF</a>	
 AHA005XXX	Hercules 5.0A AC Power Adaptor Full Details: <a href="http://www.laserglow.com/AHA">www.laserglow.com/AHA</a>	
 ACAGHE1XX	Carrying Case-1 Hercules/Scorp Pro/Scorp-D Pro/VegaHV - STD Full Details: <a href="http://www.laserglow.com/ACA">www.laserglow.com/ACA</a>	Included With Laser
 AGF5327XX	LSG-532-NF-7 Fit-Over Safety Goggles 532nm Output: OD 7+ at 190-532 nm CE Certified Full Details: <a href="http://www.laserglow.com/AGF">www.laserglow.com/AGF</a>	

## FOR MORE INFORMATION PLEASE CONTACT:

LASERGLOW TECHNOLOGIES  
99 Ingram Dr. Unit B, North York, ON, Canada M6M2L7  
Tel. (416) 729-7976 Fax (716) 322-3510  
[sales@laserglow.com](mailto:sales@laserglow.com) [www.laserglow.com](http://www.laserglow.com)

E&OE: Data included in this sheet may be subject to change without notice.

Please confirm critical specifications with our staff prior to ordering.