

## Laserglow Product Datasheet

### Orion Pro Portable Red Laser Module



#### Series Specifications:

Nominal Wavelength	671 nm
Output Type	CW
Laser Source Type	DPSS

#### Overview:

The Orion Pro Series, available at 100 mW, is a high powered portable red laser. At 671 nm the Orion Pro emits in the deeper red portion of the visible spectrum. Ideal for maximum portability whether in the lab or in the field.

The Orion Pro is a DPSS laser, which has very good beam quality and low divergence.

#### Key Features:

- *Starting at: \$742*
- *Output Power: >100 mW*
- *Expected Life: 5000 hours*
- *Wavelength: 671 nm (red)*
- *Key Feature: High output power red laser*
- *Casing: Hard Anodized Machined Aluminum*
- *Package Includes: Portable laser, aluminum framed carrying case, instructions/warranty.*
- *Warranty: 6 Month Standard/12 Month Extended*
- *Duty Cycle: 100%*

**U.S. Orders:** This laser cannot be shipped to the United States. If you live in the USA please consider the [671 nm laboratory laser](#), which provides similar output but is not portable. [Click here for more information.](#)

**Canadian Orders:** This laser can be shipped within Canada to Canadian companies who provide the following documentation:

- A valid LSO Certificate with a certified Laser Safety Officer on the premises
- A company purchase order
- A signed Declaration of Use. Please contact our sales department for this form

## Specifications:

This spec sheet has been generated specifically for part number GO7-GHE, per your request, and data for the entire series is also displayed for your reference. The specs which are specific to GO7-GHE have been highlighted below in **red + bold**.

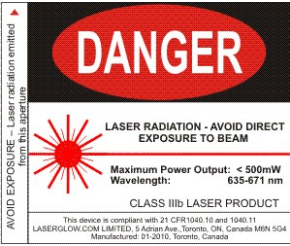
Output Power (mW)	<b>&gt;100</b>
Central Wavelength (nm)	<b>670.5</b>
Divergence (mrad, full angle)	<b>&lt;1.5</b>
Beam Dimensions (mm, 1/e <sup>2</sup> )	<b>5</b>
Operating Temperature Range (°C)	<b>15 to 35</b>
Max. Power Input Duty Cycle	<b>100%</b>
Standard Warranty (months)	<b>6</b>
MTTF (operational hours)	<b>5000</b>
Weight of Product or Laser Head (kg)	<b>0.92</b>
Dimensions of Product or Laser Head (mm)	<b>389.4 (l) x 52.7 (d)</b>
Power Supply	<b>3 x D Batteries</b>

CW: All specifications are based on performance at full output power and after the specified warmup period. Output characteristics may change if the laser is run at a different power level.

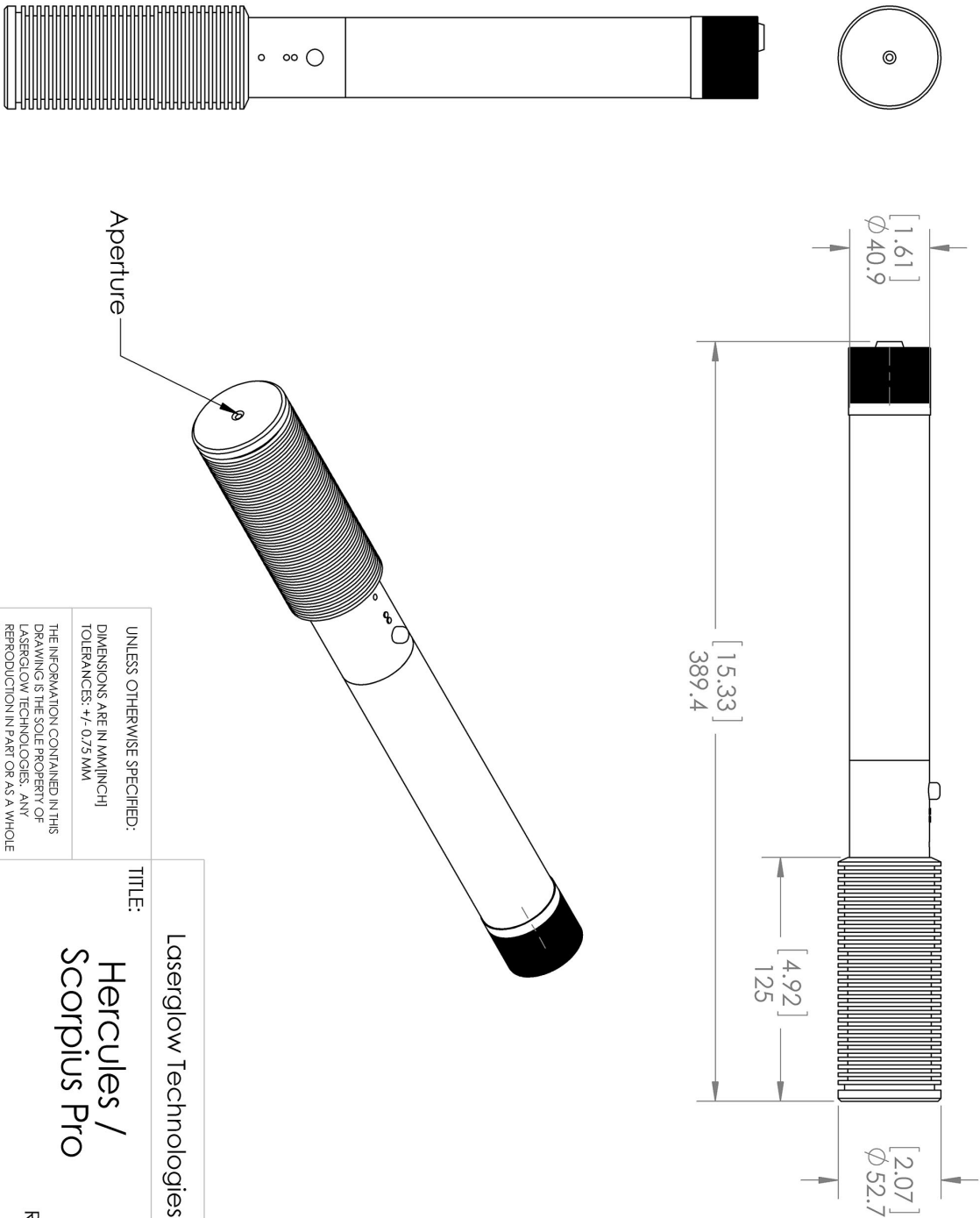
Q-Switched: Specifications are based on the laser pulsing at the specified design frequency. Output characteristics may change if the laser is run at a different frequency.

Regulatory Classification:

The model you have selected (GO7-GHE) requires the following safety label(s):







Dimensional Drawing - Laser Form Factor: GHE:



UNLESS OTHERWISE SPECIFIED: DIMENSIONS ARE IN MM(INCH) TOLERANCES: +/- 0.75 MM	
THE INFORMATION CONTAINED IN THIS DRAWING IS THE SOLE PROPERTY OF LASERGLLOW TECHNOLOGIES. ANY REPRODUCTION IN PART OR AS A WHOLE WITHOUT THE WRITTEN PERMISSION OF LASERGLLOW TECHNOLOGIES IS PROHIBITED. © 2012 LASERGLLOW.COM LIMITED. ALL RIGHTS RESERVED	
TITLE: Hercules / Scorpius Pro	
SCALE: 1:3	
SHEET 1 OF 1	
REV 1	

## Accessories:

The most popular accessories for model GO7-GHE are shown below. For additional details regarding these or other accessories please see our website or contact us directly.

Part Number	Description	
 AGF6605XX	LSG-660-NF-5 Fit-Over Safety Goggles 660nm Output: OD 5+ at 600-694 nm CE Certified Full Details: <a href="http://www.laserglow.com/AGF">www.laserglow.com/AGF</a>	
 AGM00HXXX	Hercules GlowMount Tripod Adaptor Full Details: <a href="http://www.laserglow.com/AGM">www.laserglow.com/AGM</a>	
 AHA005XXX	Hercules 5.0A AC Power Adaptor Full Details: <a href="http://www.laserglow.com/AHA">www.laserglow.com/AHA</a>	
 ACAGHE1XX	Carrying Case-1 Hercules/Scorp Pro/Scorp-D Pro/VegaHV - STD Full Details: <a href="http://www.laserglow.com/ACA">www.laserglow.com/ACA</a>	Included With Laser

## FOR MORE INFORMATION PLEASE CONTACT:

LASERGLOW TECHNOLOGIES  
99 Ingram Dr. Unit B, North York, ON, Canada M6M2L7  
Tel. (416) 729-7976 Fax (716) 322-3510  
[sales@laserglow.com](mailto:sales@laserglow.com) [www.laserglow.com](http://www.laserglow.com)

E&OE: Data included in this sheet may be subject to change without notice.

Please confirm critical specifications with our staff prior to ordering.