

Laserglow Product Datasheet

Orion HV Portable Red Laser Module

Laserglow Part Number: GOH400XXX



This model is listed as **inactive** in our product database. Stock may be limited, and availability is subject to change without notice.

Similar Products:

For information about the other lasers in this product family visit:

<http://www.laserglow.com/GOH>



Ordering:

Order Online Now or Request Quote:

<http://www.laserglow.com/GOH400XXX>

Series Specifications:

Nominal Wavelength	635 nm
Output Type	CW
Laser Source Type	Diode

Overview:

The Orion HV, emitting at 635 nm, allows for maximum visibility in the red portion of the visible spectrum. The perceived brightness of the Orion HV at 200 mW is roughly equal to that of Laserglow's Orion at >500 mW. This allows for a greater level of safety without compromising visibility. Ideal for maximum portability whether in the lab or in the field.

Laserglow's Orion HV Series red portable lasers are individually tested using a laser power meter for a 10-minute continuous period to ensure sustained performance. This test is done at least 3 times before being shipped to the customer.

Key Features:

- **Starting at: \$742**
- **Output Powers:** > 200 mW
- **Key Feature:** High visibility red laser
- **Wavelength:** 635 nm (red)
- **Casing:** Hard Anodized Machined Aluminum
- **Package Includes:** Portable laser, aluminum framed carrying case, instructions/warranty.
- **Warranty:** 6 Month Standard/12 Month Extended
- **Duty Cycle:** 5 min. on/1 min. off

Please note: This laser cannot be shipped to the United States. If you live in the USA please consider the [Taurus laser](#) which has a similar click on/off switch and is Class IIIa compliant. If you require high power, then you may also consider the [635 nm laboratory laser](#), which provides similar output but is not portable. [Click here for more information.](#)

Specifications:

This spec sheet has been generated specifically for part number GOH400XXX, per your request, and data for the entire series is also displayed for your reference. The specs which are specific to GOH400XXX have been highlighted below in **red + bold**.

Output Power (mW)	> 400
Central Wavelength (nm)	635
Divergence (mrad, full angle)	< 1.5
Beam Dimensions (mm, 1/e²)	5
Approximate Peak Power (W)	499
Operating Temperature Range (°C)	15 to 35
Total Power Consumption (W)	5
Max. Power Input Duty Cycle	100%
Standard Warranty (months)	6
MTTF (operational hours)	5000
Weight of Product or Laser Head (kg)	0.28
Dimensions of Product or Laser Head (mm)	190 (l) x 38 (d)
Power Supply	2 x C Batteries

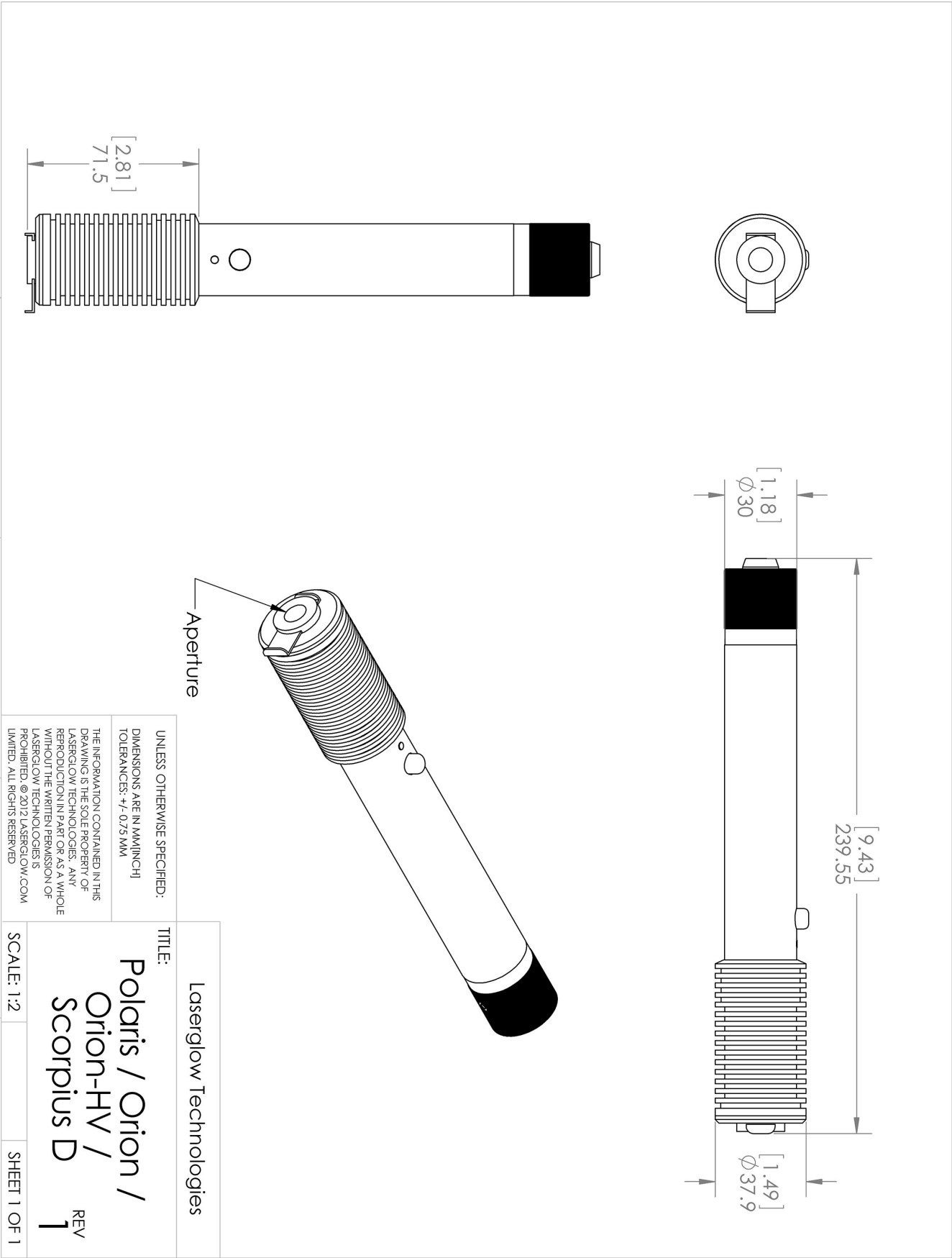
CW: All specifications are based on performance at full output power and after the specified warmup period. Output characteristics may change if the laser is run at a different power level.

Q-Switched: Specifications are based on the laser pulsing at the specified design frequency. Output characteristics may change if the laser is run at a different frequency.

Regulatory Classification:






The model you have selected (GOH400XXX) requires the following safety label(s):





Accessories:

The most popular accessories for model GOH400XXX are shown below. For additional details regarding these or other accessories please see our website or contact us directly.

Part Number	Description	
 AGF6605XX	LSG-660-NF-5 Fit-Over Safety Goggles 660nm Output: OD 5+ at 600-694 nm CE Certified Full Details: www.laserglow.com/AGF	
 AGM00AXXX	Aries GlowMount Tripod Adaptor Full Details: www.laserglow.com/AGM	
 AGS6605XX	LSG-660-NS-5 Sport Laser Safety Goggles 660nm Output: OD 5+ at 606-694 nm CE Certified Full Details: www.laserglow.com/AGS	
 ACAGAR1XX	Carrying Case-3 Aries/Scorp/Scorp-D/Orion/OrionHV/Vega/Polaris - Small Full Details: www.laserglow.com/ACA	Included With Laser
 AGF6605XX	LSG-660-NF-5 Fit-Over Safety Goggles 660nm Output: OD 5+ at 600-694 nm CE Certified Full Details: www.laserglow.com/AGF	

FOR MORE INFORMATION PLEASE CONTACT:

LASERGLOW TECHNOLOGIES
99 Ingram Dr. Unit B, North York, ON, Canada M6M2L7
Tel. (416) 729-7976 Fax (716) 322-3510
sales@laserglow.com www.laserglow.com

E&OE: Data included in this sheet may be subject to change without notice.

Please confirm critical specifications with our staff prior to ordering.