

# Laserglow Product Datasheet

## Polaris Portable Blue Laser Module

### Laserglow Part Number: GPO100XXX



This model is listed as **inactive** in our product database. Stock may be limited, and availability is subject to change without notice.

#### Similar Products:

For information about the other lasers in this product family visit:

<http://www.laserglow.com/GPO>

#### Ordering:

Order Online Now or Request Quote:

<http://www.laserglow.com/GPO100XXX>



#### Series Specifications:

Nominal Wavelength	447 nm
Output Type	CW
Laser Source Type	Diode

#### Overview:

The Polaris is the world's most powerful visible-wavelength blue portable laser. Cutting-edge 447 nm laser diode technology brings power levels previously only possible using bench-top blue lasers at a fraction of the cost. Its ground breaking 447 nm wavelength is not only captivating but can also produce fluorescence effects in some materials. Diode technology means energy efficiency, allowing this laser to operate three times as long as DPSS blue portable lasers. Available in power levels from >100 mW to >1 W sustained output with a 100% duty cycle. >500 mW and higher models include free laser safety goggles.

#### Key Features:

- **Starting at: \$389**
- **Output Power:** Varies with model
- **Expected Life:** 5000 hours
- **Wavelength:** 447 nm (deep blue)
- **Key Feature:** Highest-output visible-light laser available!
- **Package Includes:** Portable laser, aluminum framed carrying case, instructions/warranty
- **Class IV lasers also include:** Free laser safety goggles.
- **Casing:** Hard anodized machined aluminum
- **Safety Info:** Class IIIb/IV
- **Duty Cycle:** 100%

**U.S. Orders:** This laser cannot be shipped to the United States. If you live in the USA please consider the [standard Hydra laser](#) which has simple push-button operation and is Class IIIa compliant. If you require high power, then please consider the [447 nm laboratory laser](#) which provides similar output but is not portable. [Click here for more information.](#)

**Canadian Orders:** This laser can be shipped within Canada to Canadian companies who provide the following documentation:

- A valid LSO Certificate with a certified Laser Safety Officer on the premises

- A company purchase order
- A signed Declaration of Use. Please contact our sales department for this form

**Specifications:**

This spec sheet has been generated specifically for part number GPO100XXX, per your request, and data for the entire series is also displayed for your reference. The specs which are specific to GPO100XXX have been highlighted below in **red + bold**.

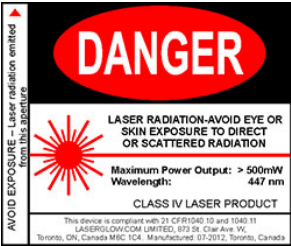
Output Power (mW)	<b>&gt;100</b>
Central Wavelength (nm)	<b>447</b>
Divergence (mrad, full angle)	<b>&lt;1.5</b>
Beam Dimensions (mm, 1/e²)	<b>5</b>
Approximate Peak Power (W)	<b>180</b>
Operating Temperature Range (°C)	<b>-5 to 35</b>
Total Power Consumption (W)	<b>4</b>
Max. Power Input Duty Cycle	<b>100%</b>
Standard Warranty (months)	<b>6</b>
MTTF (operational hours)	<b>5000</b>
Weight of Product or Laser Head (kg)	<b>0.28</b>
Dimensions of Product or Laser Head (mm)	<b>190 (l) x 38 (d)</b>
Power Supply	<b>2 x CR123A Batteries</b>

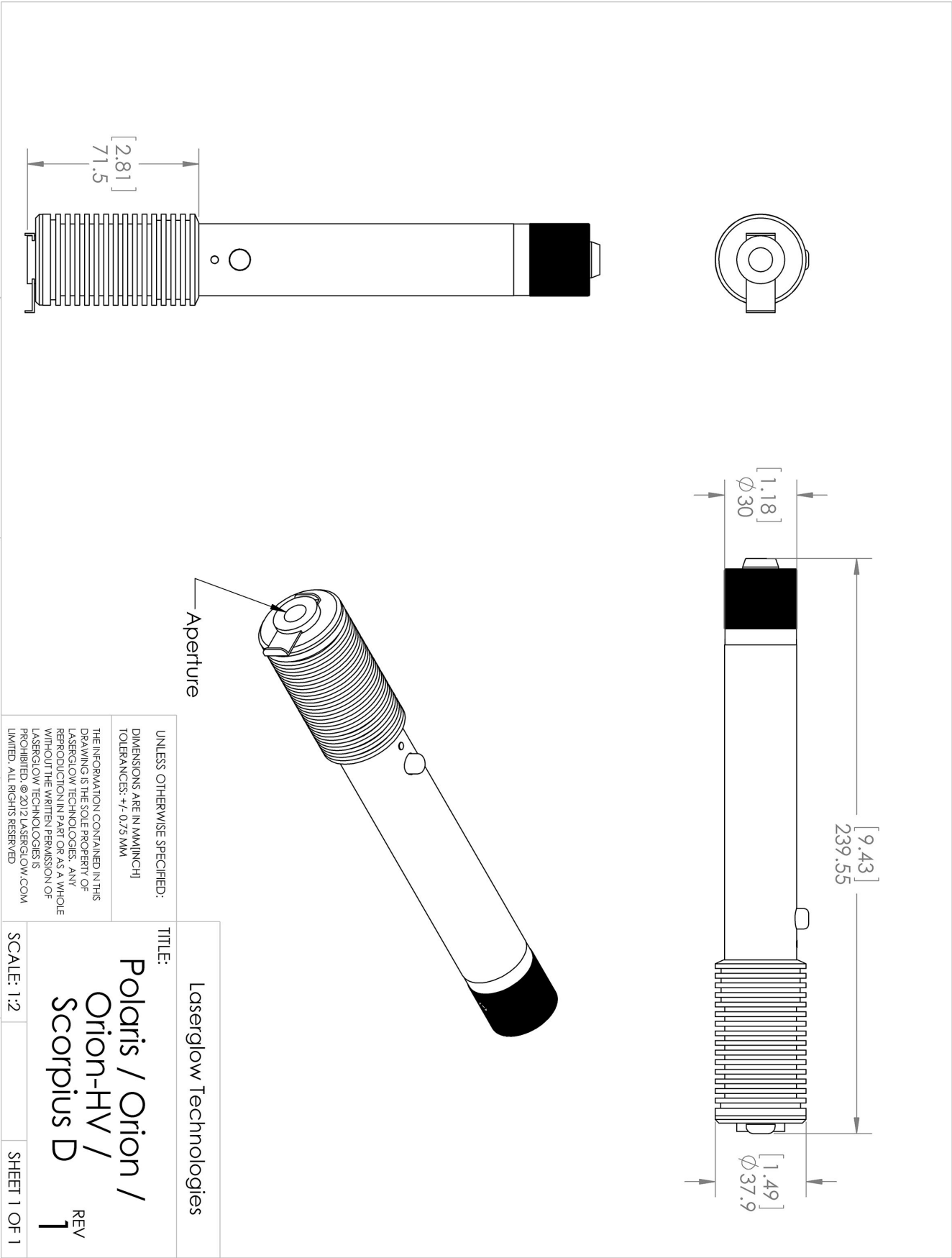
CW: All specifications are based on performance at full output power and after the specified warmup period. Output characteristics may change if the laser is run at a different power level.

Q-Switched: Specifications are based on the laser pulsing at the specified design frequency. Output characteristics may change if the laser is run at a different frequency.

Regulatory Classification:




The model you have selected (GPO100XXX) requires the following safety label(s):





### Accessories:

The most popular accessories for model GPO100XXX are shown below. For additional details regarding these or other accessories please see our website or contact us directly.

Part Number	Description	
 AGF5327XX	LSG-532-NF-7 Fit-Over Safety Goggles 532nm Output: OD 7+ at 190-532 nm CE Certified Full Details: <a href="http://www.laserglow.com/AGF">www.laserglow.com/AGF</a>	
 AGM00AXXX	Aries GlowMount Tripod Adaptor Full Details: <a href="http://www.laserglow.com/AGM">www.laserglow.com/AGM</a>	
 ACAGAR1XX	Carrying Case-3 Aries/Scorp/Scorp-D/Orion/OrionHV/Vega/Polaris - Small Full Details: <a href="http://www.laserglow.com/ACA">www.laserglow.com/ACA</a>	Included With Laser

### FOR MORE INFORMATION PLEASE CONTACT:

LASERGLOW TECHNOLOGIES  
99 Ingram Dr. Unit B, North York, ON, Canada M6M2L7  
Tel. (416) 729-7976 Fax (716) 322-3510  
[sales@laserglow.com](mailto:sales@laserglow.com) [www.laserglow.com](http://www.laserglow.com)

E&OE: Data included in this sheet may be subject to change without notice.

Please confirm critical specifications with our staff prior to ordering.