

Laserglow Product Datasheet

Scorpius D Portable Infrared Laser Module

Laserglow Part Number: GSD10BXXX



This model is listed as **inactive** in our product database. Stock may be limited, and availability is subject to change without notice.

Similar Products:

For information about the other lasers in this product family visit:

<http://www.laserglow.com/GSD>

Ordering:

Order Online Now or Request Quote:

<http://www.laserglow.com/GSD10BXXX>



Series Specifications:

Nominal Wavelength	808 nm
Output Type	CW
Laser Source Type	Diode

Overview:

The Scorpius-D Series, a portable diode laser emitting at 808 nm, produces a completely invisible laser beam. Extreme caution must be used when operating any infrared laser as the human eye will not detect it. Laser safety goggles are included with each Scorpius Series laser. The Scorpius-D Series is available at up to >1.0 W, much greater output power levels than those available in visible-wavelength portable lasers. In addition the price per milliwatt of output power is a fraction of the cost of visible lasers. Ideal for IR laser experimentation such building a 532 nm laser using Nd:YVO4 and KTP crystals to produce green laser light at 532 nm.

Laserglow's Scorpius-D Series IR portable lasers are individually tested using a laser power meter for a 10-minute continuous period to ensure sustained performance. This test is done at least 3 times before being shipped to the customer.

Key Features:

- **Starting at: \$892**
- **Output Power:** 1000 mW
- **Key Feature:** Capable of generating large amounts of heat at close range.
- **Wavelength:** 808 nm (Infrared)
- **Casing:** Hard Anodized Machined Aluminum
- **Package Includes:** Portable laser, laser safety goggles, aluminum framed carrying case, instructions/warranty.
- **Warranty:** 6 Month Standard/12 Month Extended
- **Safety Info:** Class IV
- **Duty Cycle:** 100%

Please note: This laser cannot be shipped to the United States. If you live in the USA please consider the [808 nm laboratory laser](#), which provides similar output but is not portable. [Click here for more information.](#)

Specifications:

This spec sheet has been generated specifically for part number GSD10BXXX, per your request, and data for the entire series is also displayed for your reference. The specs which are specific to GSD10BXXX have been highlighted below in **red + bold**.

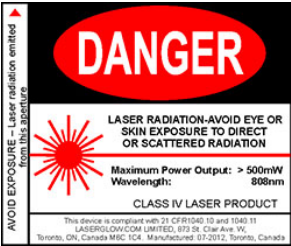
Output Power (W)	>1
Central Wavelength (nm)	808
Divergence (mrad, full angle)	<4
Beam Dimensions (mm, 1/e²)	6x6
Approximate Peak Power (W)	1100
Operating Temperature Range (°C)	15 to 35
Total Power Consumption (W)	5
Max. Power Input Duty Cycle	100%
Standard Warranty (months)	6
MTTF (operational hours)	5000
Weight of Product or Laser Head (kg)	0.28
Dimensions of Product or Laser Head (mm)	190 (l) x 38 (d)
Power Supply	2 x C Batteries

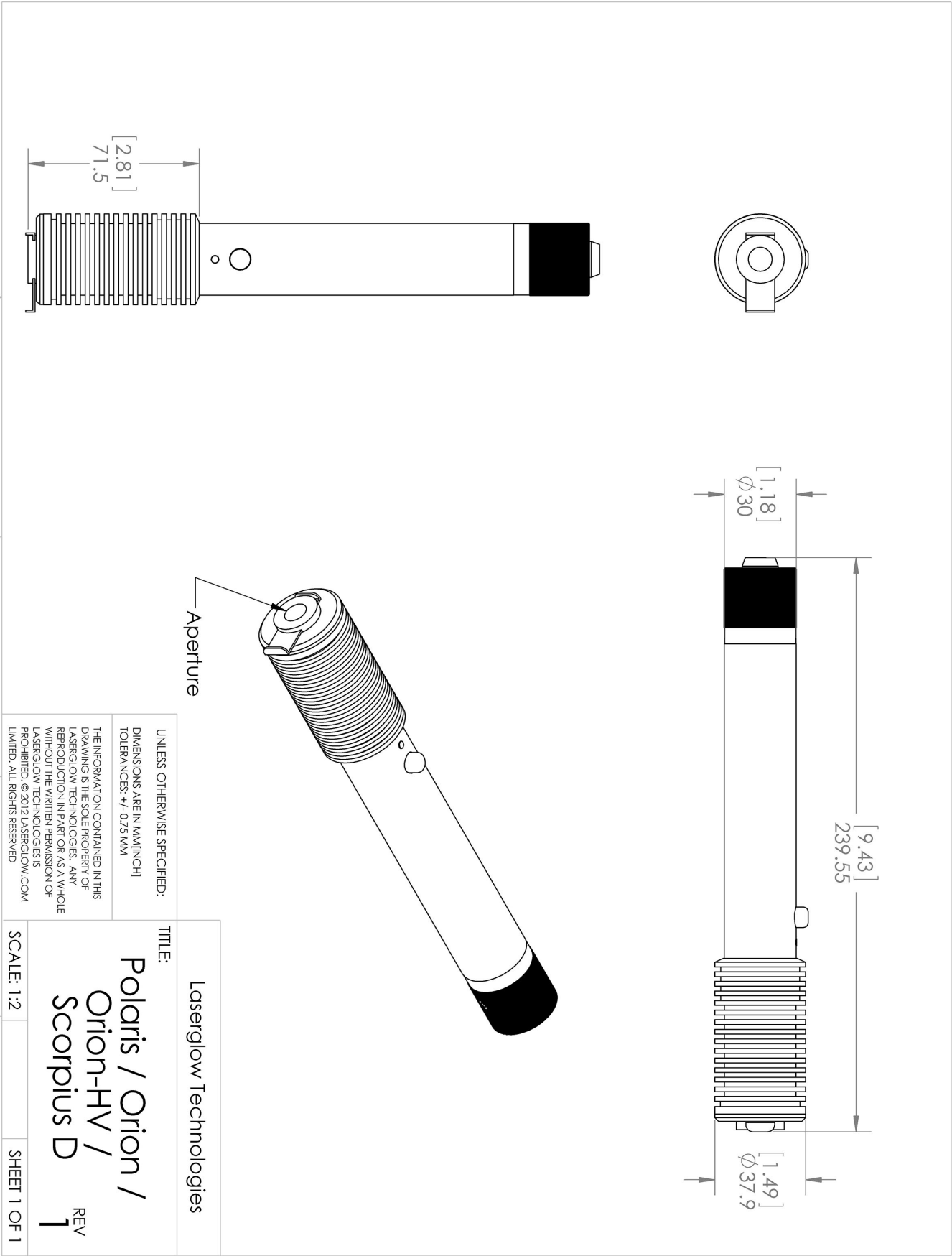
CW: All specifications are based on performance at full output power and after the specified warmup period. Output characteristics may change if the laser is run at a different power level.

Q-Switched: Specifications are based on the laser pulsing at the specified design frequency. Output characteristics may change if the laser is run at a different frequency.

Regulatory Classification:




The model you have selected (GSD10BXXX) requires the following safety label(s):





Accessories:

The most popular accessories for model GSD10BXXX are shown below. For additional details regarding these or other accessories please see our website or contact us directly.

Part Number	Description	
 AGF80859X	LSG-808-NF-6 Fit-Over Safety Goggles 808nm Output: OD 6+ at 800-818 nm CE Certified Full Details: www.laserglow.com/AGF	
 AGM00AXXX	Aries GlowMount Tripod Adaptor Full Details: www.laserglow.com/AGM	
 ACAGAR1XX	Carrying Case-3 Aries/Scorp/Scorp-D/Orion/OrionHV/Vega/Polaris - Small Full Details: www.laserglow.com/ACA	Included With Laser

FOR MORE INFORMATION PLEASE CONTACT:

LASERGLOW TECHNOLOGIES
99 Ingram Dr. Unit B, North York, ON, Canada M6M2L7
Tel. (416) 729-7976 Fax (716) 322-3510
sales@laserglow.com www.laserglow.com

E&OE: Data included in this sheet may be subject to change without notice.

Please confirm critical specifications with our staff prior to ordering.