

## Galileo Green Laser Pointer

**Laserglow Part Number: GGA005XXX**



### Similar Products:

For information about the other lasers in this product family visit:

<http://www.laserglow.com/GGA>

### Ordering:

Order Online Now or Request Quote:

<http://www.laserglow.com/GGA005XXX>



### Series Specifications:

Nominal Wavelength	532 nm
Output Type	CW
Laser Source Type	DPSS

### Overview:

The Galileo is the latest in functionality, reliability and output power stability. The click-on, click-off switch allows hands-free operation and easy use when continuous operation is required. The miniature heat sink means that the output will not drop during long operating periods. A fresh, high-capacity single lithium battery will keep this unit running for up to 2 hours! The Galileo is ideal for alignment, astronomy, and all other continuous use applications.

All of Laserglow's green laser pointers are IR-filtered for safety and employ APC technology to maintain constant output power. APC (Automatic Power Control) is a system that uses an optical feedback loop to ensure stable laser output.

### Key Features:

- *Starting at: \$69*
- *Output Power:* 3.0 mW - 5.0 mW
- *Casing:* Hard Anodized black machined aluminum
- *Wavelength:* 532 nm (green)
- *Key Feature:* 100% continuous operation, click-on/click-off
- *Package Includes:* Portable laser, standard-capacity battery, carrying case, instructions/warranty.
- *Safety Info:* Complies with Class IIIa regulations.
- *Duty Cycle:* 100%

Quality, safety, unique features and range make Laserglow the leader in green pointers. [Learn more here.](#)

## Specifications:

This spec sheet has been generated specifically for part number GGA005XXX, per your request, and data for the entire series is also displayed for your reference. The specs which are specific to GGA005XXX have been highlighted below in **red + bold**.

Laser Form Factor	<b>GGA</b>
Output Power (mW)	<b>&lt;5</b>
FDA Safety Class	<b>IIIa</b>
Central Wavelength (nm)	<b>531.65</b>
Divergence (mrad, full angle)	<b>&lt;1.2</b>
Beam Dimensions (mm, 1/e <sup>2</sup> )	<b>1.5</b>
Transverse Mode	<b>TEM00</b>
Longitudinal Modes	<b>Multiple</b>
Operating Temperature Range (°C)	<b>15 to 35</b>
Storage Temperature Range (°C)	<b>-10 to 50</b>
Total Power Consumption (W)	<b>2</b>
Max. Power Input Duty Cycle	<b>100%</b>
Cooling Method	<b>Passive Air</b>
Standard Warranty (months)	<b>6</b>
MTTF (operational hours)	<b>5000</b>
Weight of Product or Laser Head (kg)	<b>0.08</b>
Dimensions of Product or Laser Head (mm)	<b>118 (l) x 20 (d)</b>
Power Supply	<b>1 x CR123A Battery</b>

CW: All specifications are based on performance at full output power and after the specified warmup period. Output characteristics may change if the laser is run at a different power level.

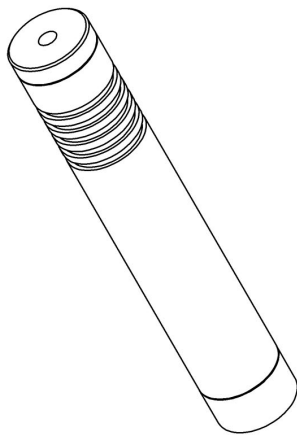
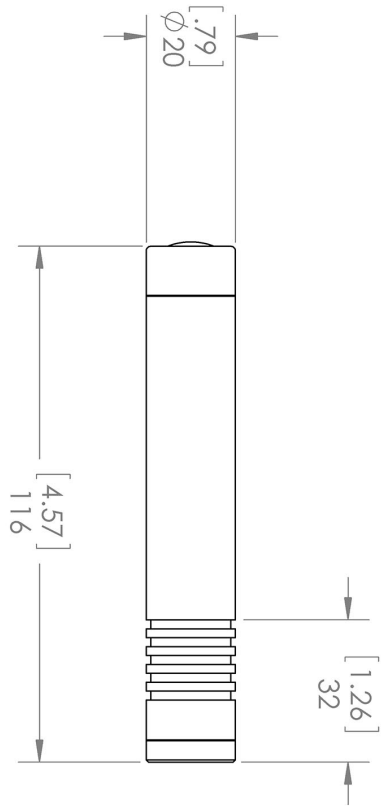
Q-Switched: Specifications are based on the laser pulsing at the specified design frequency. Output characteristics may change if the laser is run at a different frequency.

## Regulatory Classification:

The model you have selected (GGA005XXX) requires the following safety label(s):







**Dimensional Drawing - Laser Form Factor: GGA:**



<p><b>Laserglow Technologies</b></p>	
<p>TITLE:</p>	
<p><b>Galileo</b></p>	
<p>UNLESS OTHERWISE SPECIFIED:                  DIMENSIONS ARE IN MILLIMETER                  TOLERANCES: +/- 0.075 MM</p>	
<p>THE INFORMATION CONTAINED IN THIS DRAWING IS THE SOLE PROPERTY OF LASERGLOW TECHNOLOGIES. ANY REPRODUCTION IN PART OR AS A WHOLE WITHOUT THE WRITTEN PERMISSION OF LASERGLOW TECHNOLOGIES IS PROHIBITED. © 2012 LASERGLOW.COM LIMITED. ALL RIGHTS RESERVED</p>	
<p>SCALE: 2:3</p>	<p>REV  <b>1</b></p>
<p>SHEET 1 OF 1</p>	

## Accessories:

The most popular accessories for model GGA005XXX are shown below. For additional details regarding these or other accessories please see our website or contact us directly.

Part Number	Description	
 AGM00GXXX	Galileo GlowMount Tripod Adaptor 20.1mm ID Full Details: <a href="http://www.laserglow.com/AGM">www.laserglow.com/AGM</a>	
 ASE001XXX	Engraving On Laser Pointer Max. 2 lines 45 characters each Full Details: <a href="http://www.laserglow.com/ASE">www.laserglow.com/ASE</a>	
 ATPC30XXX	Mini Tripod Max height 175mm Full Details: <a href="http://www.laserglow.com/ATP">www.laserglow.com/ATP</a>	
 ATPC50XXX	Table Top Tripod Max height 600mm Full Details: <a href="http://www.laserglow.com/ATP">www.laserglow.com/ATP</a>	

## FOR MORE INFORMATION PLEASE CONTACT:

LASERGLOW TECHNOLOGIES  
99 Ingram Dr. Unit B, North York, ON, Canada M6M2L7  
Tel. (416) 729-7976 Fax (480) 247-4864  
[sales@laserglow.com](mailto:sales@laserglow.com) [www.laserglow.com](http://www.laserglow.com)

E&OE: Data included in this sheet may be subject to change without notice.

Please confirm critical specifications with our staff prior to ordering.