

## Galileo Pro Portable Alignment Laser Module

Laserglow Part Number: **GGE005XXX**



### Similar Products:

For information about the other lasers in this product family visit:

<http://www.laserglow.com/GGE>

### Ordering:

Order Online Now or Request Quote:

<http://www.laserglow.com/GGE005XXX>



### Series Specifications:

Nominal Wavelength	532 nm
Output Type	CW
Laser Source Type	DPSS

### Overview:

Galileo Pro with adjustable beam alignment. Adjustable set screws can be used to direct the beam parallel to the housing, as beams in most hand-held laser pointers are not guaranteed parallel. This makes the Galileo PRO a perfect choice where the body of the laser should serve as your alignment guide, or when the laser rotates on a shaft.

All of Laserglow's green laser pointers are IR-filtered for safety and employ APC technology to maintain constant output power. APC (Automatic Power Control) is a system that uses an optical feedback loop to ensure stable laser output.

### Key Features:

- **Starting at: \$129**
- **Output Power:** 3 mW - 5 mW (model dependent)
- **Casing:** Hard Anodized black machined aluminum
- **Wavelength:** 532 nm (green)
- **Key Feature:** 100% continuous operation
- **Key Feature:** 4 Adjustable set screws to allow beam steering
- **Package Includes:** Portable laser, battery, Allen key, carrying case, instructions/warranty.
- **Safety Info:** Complies with Class IIIa regulations.
- **Duty Cycle:** 100%

Quality, safety and unique features make Laserglow the leader in green pointers. [Learn more here.](#)

## Specifications:

This spec sheet has been generated specifically for part number GGE005XXX, per your request, and data for the entire series is also displayed for your reference. The specs which are specific to GGE005XXX have been highlighted below in **red + bold**.

Laser Form Factor	<b>GGE</b>
Output Power (mW)	<b>&lt;5</b>
FDA Safety Class	<b>IIIa</b>
Central Wavelength (nm)	<b>531.65</b>
Divergence (mrad, full angle)	<b>&lt;1.2</b>
Beam Dimensions (mm, 1/e <sup>2</sup> )	<b>1.5</b>
Transverse Mode	<b>TEM00</b>
Longitudinal Modes	<b>Multiple</b>
Operating Temperature Range (°C)	<b>15 to 35</b>
Storage Temperature Range (°C)	<b>-10 to 50</b>
Total Power Consumption (W)	<b>2</b>
Max. Power Input Duty Cycle	<b>100%</b>
Cooling Method	<b>Passive Air</b>
Standard Warranty (months)	<b>6</b>
MTTF (operational hours)	<b>5000</b>
Weight of Product or Laser Head (kg)	<b>0.08</b>
Dimensions of Product or Laser Head (mm)	<b>118 (l) x 20 (d)</b>
Power Supply	<b>1 x CR123A Battery</b>

CW: All specifications are based on performance at full output power and after the specified warmup period. Output characteristics may change if the laser is run at a different power level.

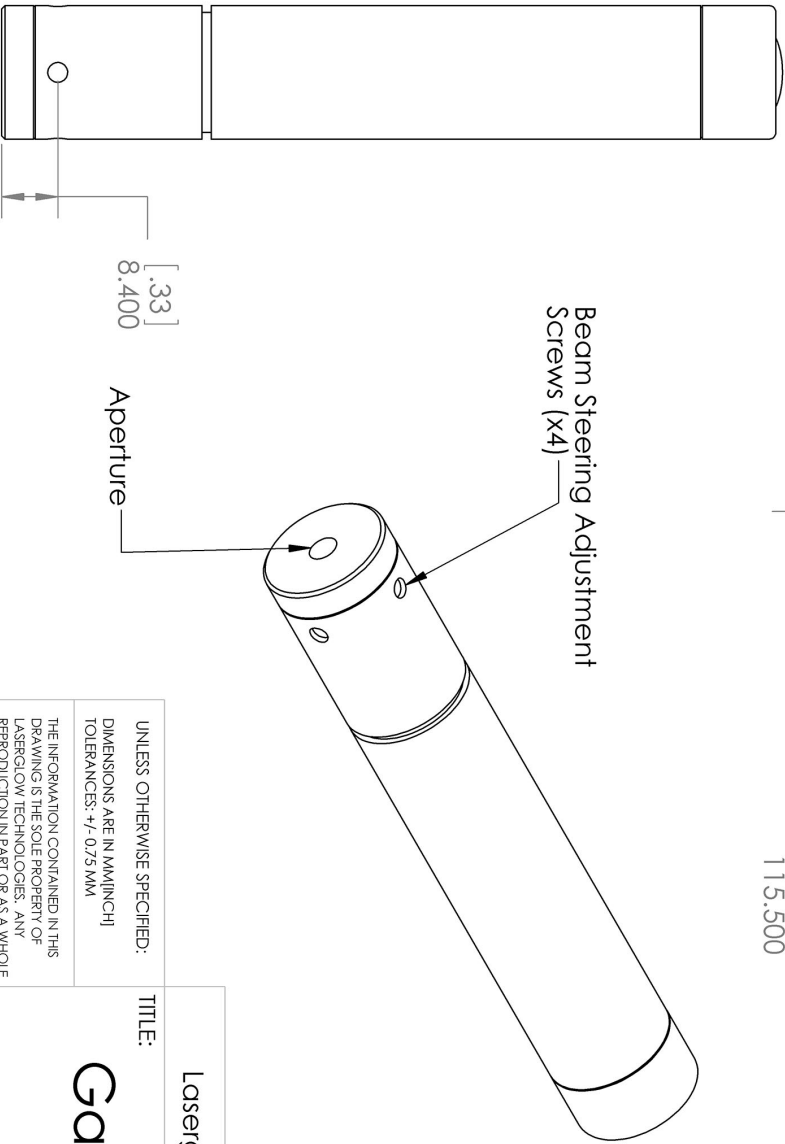
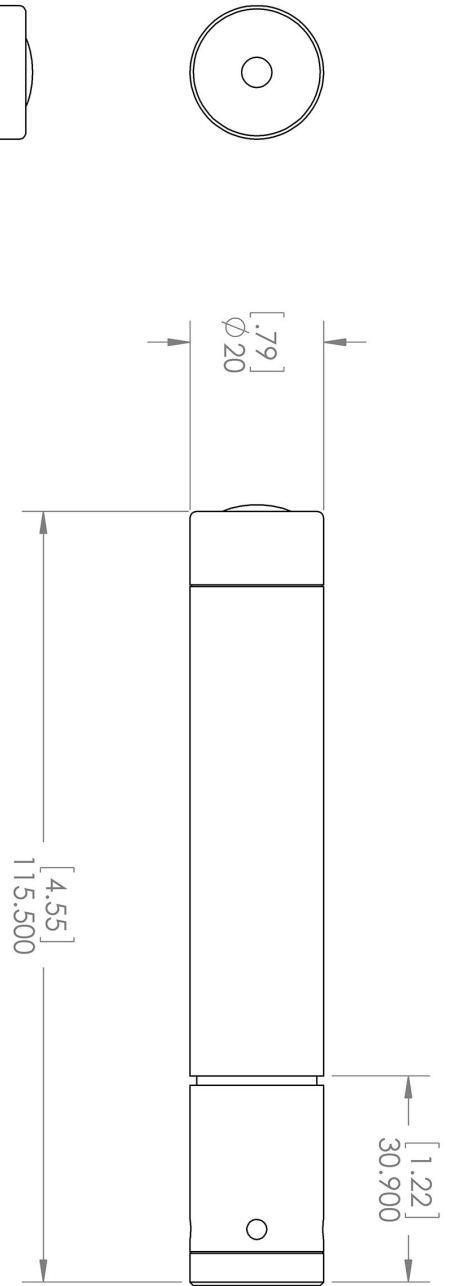
Q-Switched: Specifications are based on the laser pulsing at the specified design frequency. Output characteristics may change if the laser is run at a different frequency.

## Regulatory Classification:

The model you have selected (GGE005XXX) requires the following safety label(s):



**Dimensional Drawing - Laser Form Factor: GGE:**







UNLESS OTHERWISE SPECIFIED:  
 DIMENSIONS ARE IN MILLIMETER  
 TOLERANCES: +/- 0.075 MM

THE INFORMATION CONTAINED IN THIS DRAWING IS THE SOLE PROPERTY OF LASERGLOW TECHNOLOGIES. ANY REPRODUCTION IN PART OR AS A WHOLE WITHOUT THE WRITTEN PERMISSION OF LASERGLOW TECHNOLOGIES IS PROHIBITED. © 2012 LASERGLOW.COM LIMITED. ALL RIGHTS RESERVED

TITLE: <b>Galileo Pro</b>	
SCALE: 1:1	
SHEET 1 OF 1	REV <b>1</b>

## Accessories:

The most popular accessories for model GGE005XXX are shown below. For additional details regarding these or other accessories please see our website or contact us directly.

Part Number	Description	
 AGM00GXXX	Galileo GlowMount Tripod Adaptor 20.1mm ID Full Details: <a href="http://www.laserglow.com/AGM">www.laserglow.com/AGM</a>	
 ASE001XXX	Engraving On Laser Pointer Max. 2 lines 45 characters each Full Details: <a href="http://www.laserglow.com/ASE">www.laserglow.com/ASE</a>	
 ATPC50XXX	Table Top Tripod Max height 600mm Full Details: <a href="http://www.laserglow.com/ATP">www.laserglow.com/ATP</a>	
 ATPC30XXX	Mini Tripod Max height 175mm Full Details: <a href="http://www.laserglow.com/ATP">www.laserglow.com/ATP</a>	

## FOR MORE INFORMATION PLEASE CONTACT:

LASERGLOW TECHNOLOGIES  
99 Ingram Dr. Unit B, North York, ON, Canada M6M2L7  
Tel. (416) 729-7976 Fax (480) 247-4864  
[sales@laserglow.com](mailto:sales@laserglow.com) [www.laserglow.com](http://www.laserglow.com)

E&OE: Data included in this sheet may be subject to change without notice.

Please confirm critical specifications with our staff prior to ordering.