

Rigel Portable Yellow Laser Module

Laserglow Part Number: GRI005XXX



Similar Products:

For information about the other lasers in this product family visit:

<http://www.laserglow.com/GRI>

Ordering:

Order Online Now or Request Quote:

<http://www.laserglow.com/GRI005XXX>



Series Specifications:

Nominal Wavelength	593.5 nm
Output Type	CW
Laser Source Type	DPSS

Overview:

The Rigel's unique yellow colour truly captivates the eye, making it one of our favourite products. Using solid state sum frequency generation technology miniaturized into a 593.5 nm laser pointer the Rigel is truly a technological marvel. For those who want something more unique than red or green, Rigel provides a perfect warm golden tone, it's like holding your own miniature sun!

Key Features:

- *Starting at: \$399*
- *Output Power: 0.6 mW - 4.9 mW*
- *Expected Life: 3000-5000 hours*
- *Wavelength: 593.5 nm (yellow)*
- *Key Feature: Rare yellow laser*
- *Casing: Solid Brass with pocket clip*
- *Package Includes: Portable laser, aluminum carrying case, instructions/warranty.*
- *Safety Info: Complies with Class IIIa regulations.*
- *Duty Cycle: 30 sec. on/15 sec. off*

Specifications:

This spec sheet has been generated specifically for part number GRI005XXX, per your request, and data for the entire series is also displayed for your reference. The specs which are specific to GRI005XXX have been highlighted below in **red + bold**.

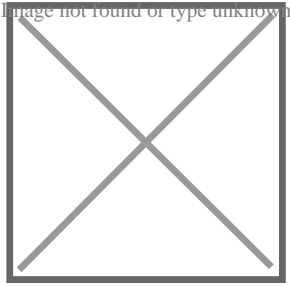
Laser Form Factor	GRI
Output Power (mW)	<2, <5
FDA Safety Class	IIIa
Central Wavelength (nm)	593.5
Divergence (mrad, full angle)	<1.5
Beam Dimensions (mm, 1/e ²)	1
Transverse Mode	TEM00
Longitudinal Modes	Multiple
Operating Temperature Range (°C)	15 to 35
Storage Temperature Range (°C)	-10 to 50
Total Power Consumption (W)	3
Max. Power Input Duty Cycle	30 sec. on/15 sec. off
Cooling Method	Passive Air
Standard Warranty (months)	6
MTTF (operational hours)	5000
Weight of Product or Laser Head (kg)	0.06
Dimensions of Product or Laser Head (mm)	152 (l) x 13 (d)
Power Supply	2 x AAA Batteries

CW: All specifications are based on performance at full output power and after the specified warmup period. Output characteristics may change if the laser is run at a different power level.

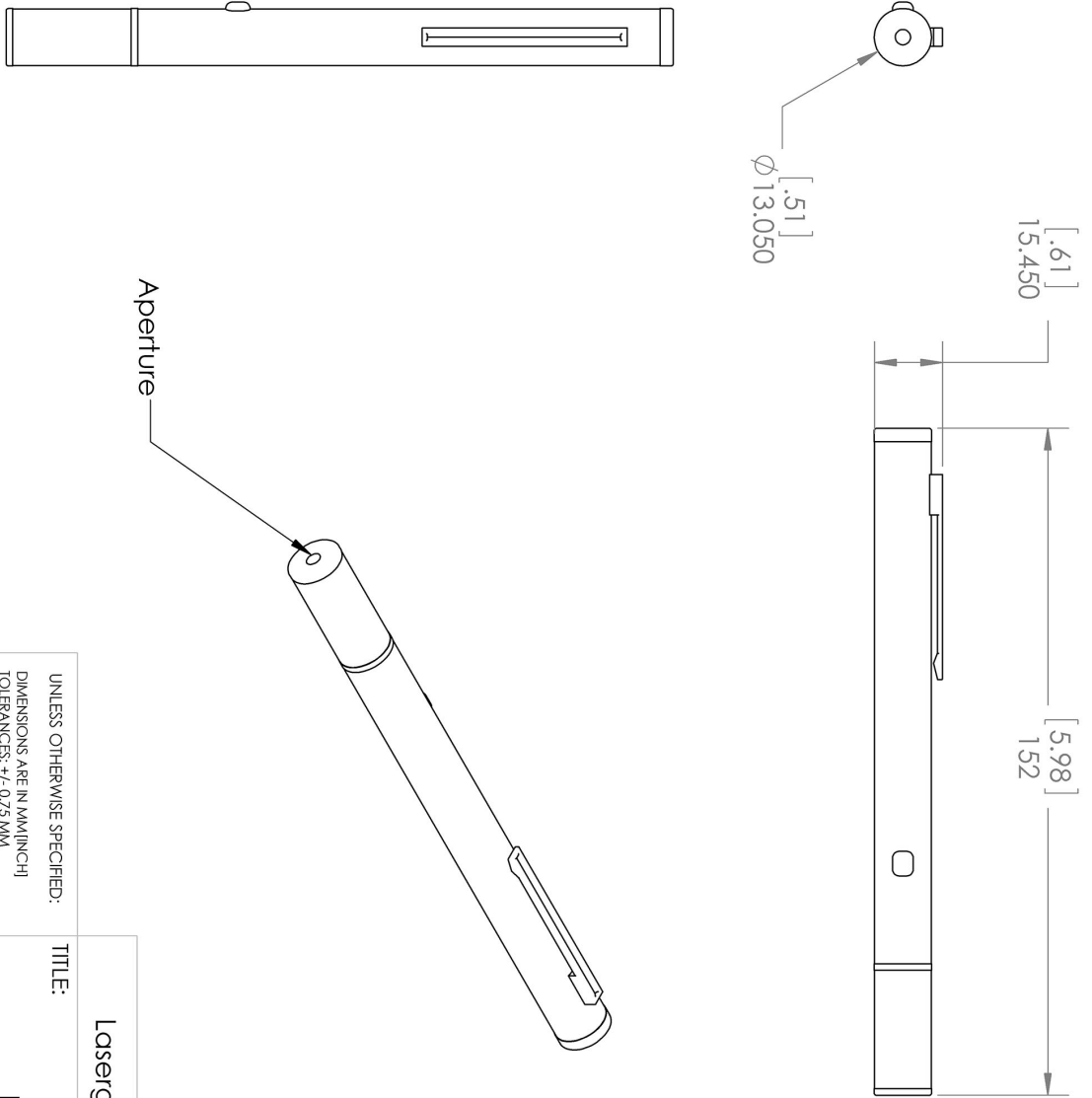
Q-Switched: Specifications are based on the laser pulsing at the specified design frequency. Output characteristics may change if the laser is run at a different frequency.

Regulatory Classification:

The model you have selected (GRI005XXX) requires the following safety label(s):



Dimensional Drawing - Laser Form Factor: GRI:



UNLESS OTHERWISE SPECIFIED:
 DIMENSIONS ARE IN MM(INCH)
 TOLERANCES: +/- 0.75 MM

THE INFORMATION CONTAINED IN THIS DRAWING IS THE SOLE PROPERTY OF LASERGLOW TECHNOLOGIES. ANY REPRODUCTION IN PART OR AS A WHOLE WITHOUT THE WRITTEN PERMISSION OF LASERGLOW TECHNOLOGIES IS PROHIBITED. © 2012 LASERGLOW.COM LIMITED. ALL RIGHTS RESERVED

Laserglow Technologies

TITLE:

Rigel

REV
1

SCALE: 2:3

SHEET 1 OF 1

Accessories:

The most popular accessories for model GRI005XXX are shown below. For additional details regarding these or other accessories please see our website or contact us directly.

Part Number	Description	
-------------	-------------	--

FOR MORE INFORMATION PLEASE CONTACT:

LASERGLOW TECHNOLOGIES
99 Ingram Dr. Unit B, North York, ON, Canada M6M2L7
Tel. (416) 729-7976 Fax (480) 247-4864
sales@laserglow.com www.laserglow.com

E&OE: Data included in this sheet may be subject to change without notice.
Please confirm critical specifications with our staff prior to ordering.