

Laserglow Product Datasheet

LBS-532 Brightline Pro Cross-Projecting Laser

Laserglow Part Number:
BCG040340

Similar Products:

For information about the other lasers in this product family visit:

<http://www.laserglow.com/BCG>

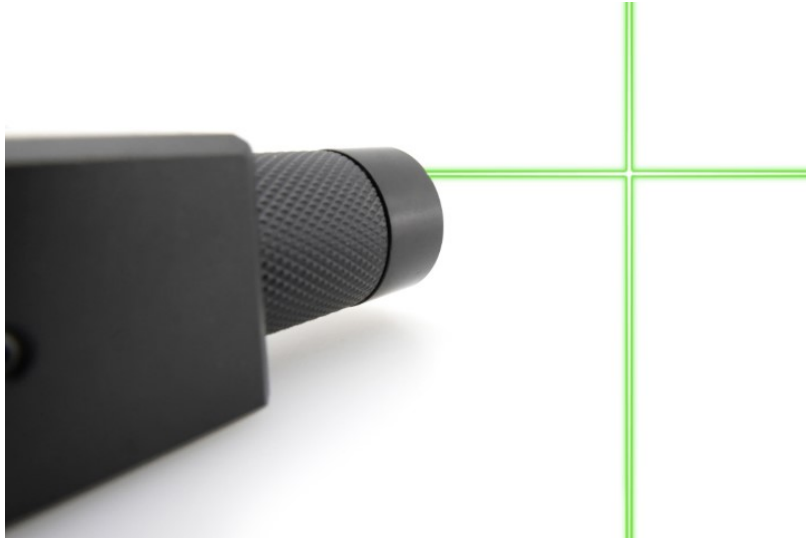
Ordering:

Order Online Now or Request Quote:

<http://www.laserglow.com/BCG040340>

Series Specifications:

Nominal Wavelength	532 nm
Output Type	CW
Laser Source Type	DPSS



Overview:

Laserglow's cross-generating laser modules are ideal for any application where a highly visible cross projected on to a surface is needed. Laser modules are available with fan angles up to 90 degrees, which determines the projected length of the two lines at a given distance. The Brightline Pro Green Cross generating modules incorporate focus-adjustable optics, greatly increasing the precision for tasks requiring the highest level of accuracy or greater working distance. In addition, green lasers are four to five times more visible to the human eye than red lasers of the same output power, making the Brightline Pro Green lasers a versatile alignment solution for any lighting conditions.

Key Features:

- **Starting at: \$359**
- **Output Power:** 5 mW to >40 mW
- **Expected Life:** 3000-5000 hours
- **Projection Type (dot/line/cross):** Cross
- **Key Feature:** Projects a highly visible focus-adjustable green cross for high precision applications.
- **Minimum achievable line thickness:** 0.25 mm at 30 cm
- **Package Includes:** Alignment laser mounted in block (mounting bracket, attenuator and power supply optional)
- **Casing:** Machined Aluminum
- **Line Straightness:** Better than 0.1% over full length
- **Perpendicularity of lines:** 90° +/- 0.5°

Specifications:

This spec sheet has been generated specifically for part number BCG040340, per your request, and data for the entire series is also displayed for your reference. The specs which are specific to BCG040340 have been highlighted below in **red + bold**.

Output Power (mW)	>20	>40
Output Power Stability (%RMS/4h)	<20	<20
IEC Safety Class	3R	3R
Central Wavelength (nm)	531.65	531.65
Projection Fan Angle (°, full angle)	90	60
Divergence (mrad, full angle)	<0.1	<0.1
Beam Dimensions (mm, 1/e ²)	4	4
Minimum Achievable Beam Diameter	0.25 mm at 0.3 m	
Operating Temperature Range (°C)	10 to 35	10 to 35
Max. TTL Modulation Freq. (Hz)	200	200
Modulation Input Signal	0-5 VDC	0-5 VDC
Total Power Consumption (W)	2	3
Max. Power Input Duty Cycle	100%	100%
Standard Warranty (months)	6	6
MTTF (operational hours)	5000	5000
Weight of Product or Laser Head (kg)	0.1	0.26
Dimensions of Product or Laser Head (mm)	80 (l) x 20 (d)	90 (l) x 36 (d)
Power Supply	3.0 VDC input	3.0 VDC input

CW: All specifications are based on performance at full output power and after the specified warmup period. Output characteristics may change if the laser is run at a different power level.

Q-Switched: Specifications are based on the laser pulsing at the specified design frequency. Output characteristics may change if the laser is run at a different frequency.

Power Supply Options:

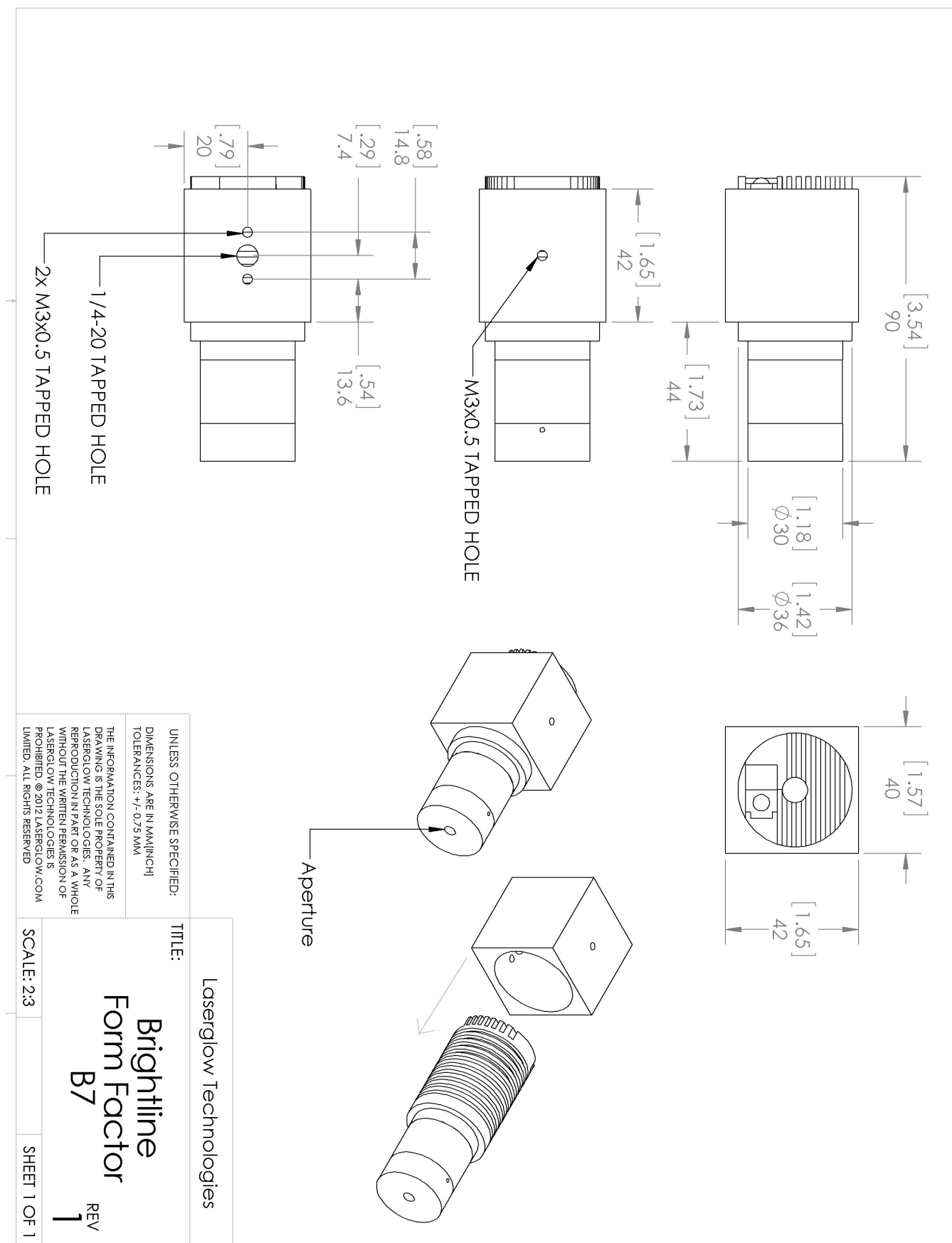
The Brightline Economy and Brightline Pro series of alignment lasers accept direct DC input of 3.0 VDC. The power connector is a 5.5 mm OD, 2.1 mm ID DC Barrel Jack. (center pole positive.) If you do not want to provide DC current directly, we recommend that you use our AC power supply. The model number for the standard North American AC Power Supply is ABP00AFX and you can find complete details here: www.laserglow.com/ABP. The dimensional drawing for the standard power supply is included on page 5 for your reference.

Regulatory Classification:

The model you have selected (BCG040340) requires the following safety label(s):






Dimensional Drawing - Laser Form Factor: B7:



Accessories:

The most popular accessories for model BCG040340 are shown below. For additional details regarding these or other accessories please see our website or contact us directly.

Part Number	Description	
 ADB002XXX	ADB-deluxe Brightline Deluxe Mounting Bracket V2 Full Details: www.laserglow.com/ADB	Included With Laser
 ABF00AXXX	ABF-N.American Brightline 3V Standard Power Supply (80-260 VAC, N. American plug) Full Details: www.laserglow.com/ABF	Included With Laser
 ABC2SPXXX	2 Lead Brightline Splitter Cable Full Details: www.laserglow.com/ABC	

FOR MORE INFORMATION PLEASE CONTACT:

LASERGLOW TECHNOLOGIES
99 Ingram Dr. Unit B, North York, ON, Canada M6M2L7
Tel. (416) 729-7976 Fax (716) 322-3510
sales@laserglow.com www.laserglow.com

E&OE: Data included in this sheet may be subject to change without notice.

Please confirm critical specifications with our staff prior to ordering.