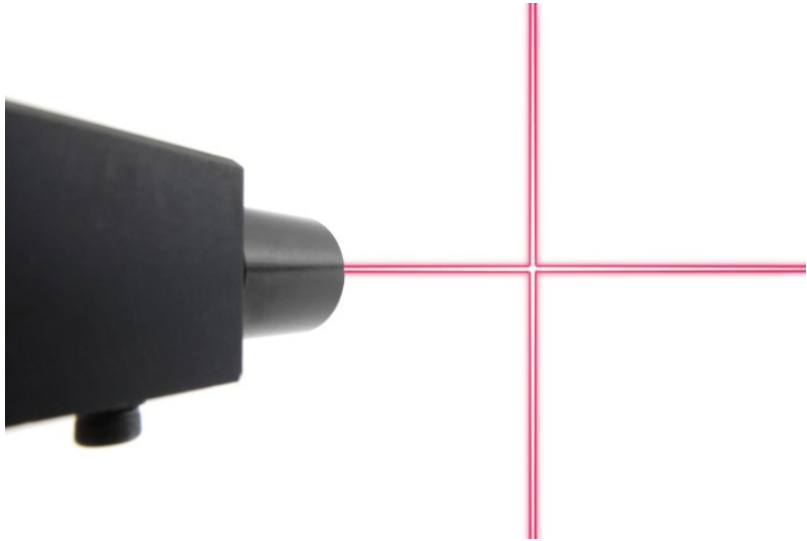


Laserglow Product Datasheet

LBD-635 Brightline Economy Cross-Projecting Laser



Series Specifications:

Nominal Wavelength	635 nm
Output Type	CW
Laser Source Type	Diode

Overview:

When you need to align in two dimensions at once, Laserglow's cross-generating laser modules enable you to use a set of two perpendicular lines to project a cross on to the work surface. The Brightline Series Red Cross generating laser modules are an economical solution for tasks requiring a moderate level of precision.

Key Features:

- *Starting at: \$159*
- *Output Power:* 5 mW to >40 mW
- *Expected Life:* 3000-5000 hours
- *Projection Type (dot/line/cross):* Cross
- *Key Feature:* Projects red cross at an economical price.
- *Casing:* Machined Aluminum
- *Package Includes:* Laser module, aluminum casing with tripod mount, plastic carrying case, instructions/warranty (standard power supply and mounting bracket included).
- *Line Straightness:* Better than 0.1% over full length
- *Perpendicularity of lines:* 90° +/- 0.5°

Specifications:

This spec sheet has been generated specifically for part number BCR-B4, per your request, and data for the entire series is also displayed for your reference. The specs which are specific to BCR-B4 have been highlighted below in **red + bold**.

Output Power (mW)	<5
Output Power Stability (%RMS/4h)	<20
IEC Safety Class	2
Projection Fan Angle (°, full angle)	90
Divergence (mrad, full angle)	<1
Beam Dimensions (mm, 1/e ²)	4
Operating Temperature Range (°C)	-10 to 40
Total Power Consumption (W)	1
Max. Power Input Duty Cycle	100%
Standard Warranty (months)	6
MTTF (operational hours)	5000
Weight of Product or Laser Head (kg)	0.06
Dimensions of Product or Laser Head (mm)	56 (l) x 16 (d)
Power Supply	3.0 VDC input

CW: All specifications are based on performance at full output power and after the specified warmup period. Output characteristics may change if the laser is run at a different power level.

Q-Switched: Specifications are based on the laser pulsing at the specified design frequency. Output characteristics may change if the laser is run at a different frequency.

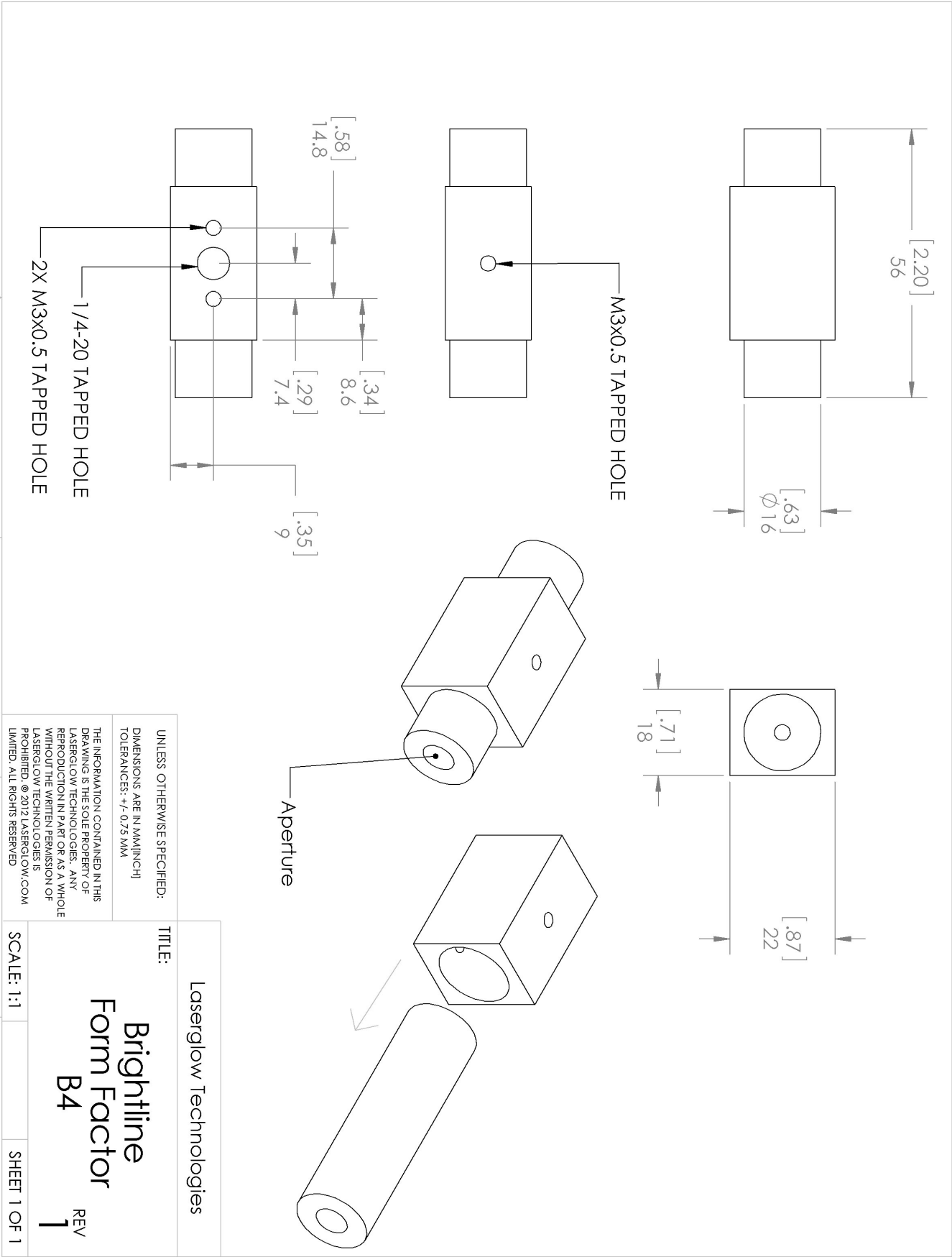
Power Supply Options:

The Brightline Economy and Brightline Pro series of alignment lasers accept direct DC input of 3.0 VDC. The power connector is a 5.5 mm OD, 2.1 mm ID DC Barrel Jack. (center pole positive.) If you do not want to provide DC current directly, we recommend that you use our AC power supply. The model number for the standard North American AC Power Supply is ABP00AFX and you can find complete details here: www.laserglow.com/ABP. The dimensional drawing for the standard power supply is included on page 5 for your reference.

Regulatory Classification:



The model you have selected (BCR-B4) requires the following safety label(s):





Accessories:

The most popular accessories for model BCR-B4 are shown below. For additional details regarding these or other accessories please see our website or contact us directly.

Part Number	Description	
 ADB002XXX	ADB-deluxe Brightline Deluxe Mounting Bracket V2 Full Details: www.laserglow.com/ADB	Included With Laser
 ABF00AXXX	ABF-N.American Brightline 3V Standard Power Supply (80-260 VAC, N. American plug) Full Details: www.laserglow.com/ABF	Included With Laser

FOR MORE INFORMATION PLEASE CONTACT:

LASERGLOW TECHNOLOGIES
99 Ingram Dr. Unit B, North York, ON, Canada M6M2L7
Tel. (416) 729-7976 Fax (716) 322-3510
sales@laserglow.com www.laserglow.com

E&OE: Data included in this sheet may be subject to change without notice.

Please confirm critical specifications with our staff prior to ordering.