

## Laserglow Product Datasheet

### LCS-0532 Low-Cost DPSS Laser System

#### Laserglow Part Number: C531505FX

This model is listed as **inactive** in our product database. Stock may be limited, and availability is subject to change without notice.



#### Similar Products:

For information about the other lasers in this product family visit:

<http://www.laserglow.com/C53>

#### Ordering:

Order Online Now or Request Quote:

<http://www.laserglow.com/C531505FX>



#### Series Specifications:

Nominal Wavelength	532 nm
Output Type	CW
Laser Source Type	DPSS

#### Overview:

The LCS-0532 Series of Diode-Pumped Solid-State (DPSS) Lasers are ideal for applications requiring up to 200 mW of 532 nm laser light at the lowest cost possible while maintaining high quality and a long operating life.

These lasers are commonly used for general illumination and fluorescence excitation. The driver is available as a complete FDA-compliant system or as an O.E.M. component with significantly reduced dimensions.

Laserglow products are currently being used by some of the World's top universities and other prominent research facilities.

#### Key Features:

- Air cooled - no need for water cooling or external chiller
- Lightweight, compact design
- Efficient DPSS technology runs on standard AC power (85 - 264 V, 47 - 63 Hz)
- Also available in 5/12 VDC power supply
- >5,000 hours continuous maintenance-free operating life
- 6 month warranty
- TTL modulation
- FDA CDRH Compliant Class IIIb / Class IV enclosure
- 48-hour replacement coverage available for an additional fee on specific models

#### Package Includes:

- Laser Head
- Driver/Power Supply
- Power Cable
- Detachable TTL wires (on applicable models)
- Keys, Safety Interlock (FDA power supplies only)
- Hard-shell Carrying Case

## Specifications:

This spec sheet has been generated specifically for part number C531505FX, per your request, and data for the entire series is also displayed for your reference. The specs which are specific to C531505FX have been highlighted below in **red + bold**.

Output Power (mW)	>15, >35, >50	>80, >100, <b>&gt;150</b>
Output Power Stability (%RMS/4h)	<5, <10	<b>&lt;5</b> , <10
Central Wavelength (nm)	531.65	<b>531.65</b>
Wavelength Tolerance (+/- nm)	1	<b>1</b>
Divergence (mrad, full angle)	<1.2	<b>&lt;1.2</b>
Beam Dimensions (mm, 1/e <sup>2</sup> )	1.5	<b>1.5</b>
Warm-up Time (minutes)	10	<b>10</b>
Optical Noise Amplitude (%RMS @ 20 Hz - 20 MHz)	<20	<b>&lt;20</b>
M <sup>2</sup>	<1.48	<b>&lt;1.48</b>
Beam Pointing Stability (mrad)	<0.05	<b>&lt;0.05</b>
Operating Temperature Range (°C)	10 to 35	<b>15 to 35</b>
Max. TTL Modulation Freq. (Hz)	10000	<b>10000</b>
Modulation Input Signal	0-5 VDC	<b>0-5 VDC</b>
Total Power Consumption (W)	10	35, <b>60</b>
Max. Power Input Duty Cycle	100%	<b>100%</b>
Standard Warranty (months)	6	<b>6</b>
MTTF (operational hours)	5000	<b>5000</b>
Weight of Product or Laser Head (kg)	0.2	<b>0.2</b>
Beam Height from Base Plate (mm)	15	<b>15</b>
Dimensions of Product or Laser Head (mm)	77 (l) x 30 (w) x 30 (h)	<b>87 (l) x 40 (w) x 40 (h)</b>

CW: All specifications are based on performance at full output power and after the specified warmup period. Output characteristics may change if the laser is run at a different power level.

Q-Switched: Specifications are based on the laser pulsing at the specified design frequency. Output characteristics may change if the laser is run at a different frequency.


## Power Supply Options:

These lasers are available with several different power supply options. The model that you have selected is highlighted below, and any other options are shown for easy reference.

	Power Supply Type:	<b>1C</b>	<b>1D</b>
OEM 12 Volt DC 	Input Power	0v to 12v	0v to 12v
	Power Supply Weight (kg)	0.2	0.2
	Dimensions (mm)	115 (l) x 59 (w) x 34 (h)	115 (l) x 59 (w) x 34 (h)

	Power Supply Type:	<b>5C</b>	<b>5D</b>
OEM 5 Volt DC 	Input Power	0v to 5v	0v to 5v
	Power Supply Weight (kg)	0.1	0.1
	Dimensions (mm)	110 (l) x 47 (w) x 30 (h)	110 (l) x 47 (w) x 30 (h)

	Power Supply Type:	<b>OC</b>	<b>OD</b>
OEM AC 	Input Power	85v to 264v	85v to 264v
	Power Supply Weight (kg)	0.14	0.14
	Dimensions (mm)	90 (l) x 47 (w) x 37 (h)	90 (l) x 47 (w) x 37 (h)

	Power Supply Type:	<b>SC</b>	<b>SD</b>
FDA-Compliant Standard 	Input Power	85v to 264v	<b>85v to 264v</b>
	Power Supply Weight (kg)	1.2	<b>1.2</b>
	Dimensions (mm)	133 (l) x 130 (w) x 65 (h)	<b>133 (l) x 130 (w) x 65 (h)</b>

	Power Supply Type:	<b>DD</b>
OEM 5/12 Volt DC 	Input Power	5v to 12v
	Power Supply Weight (kg)	0.2
	Dimensions (mm)	115 (l) x 59 (w) x 34 (h)

\*Power supply may not be exactly as shown, see dimensional drawings on next 2 pages.

\*Dimensions for fiber-integrated (I\_) include laser head packaged inside.

## Regulatory Classification:

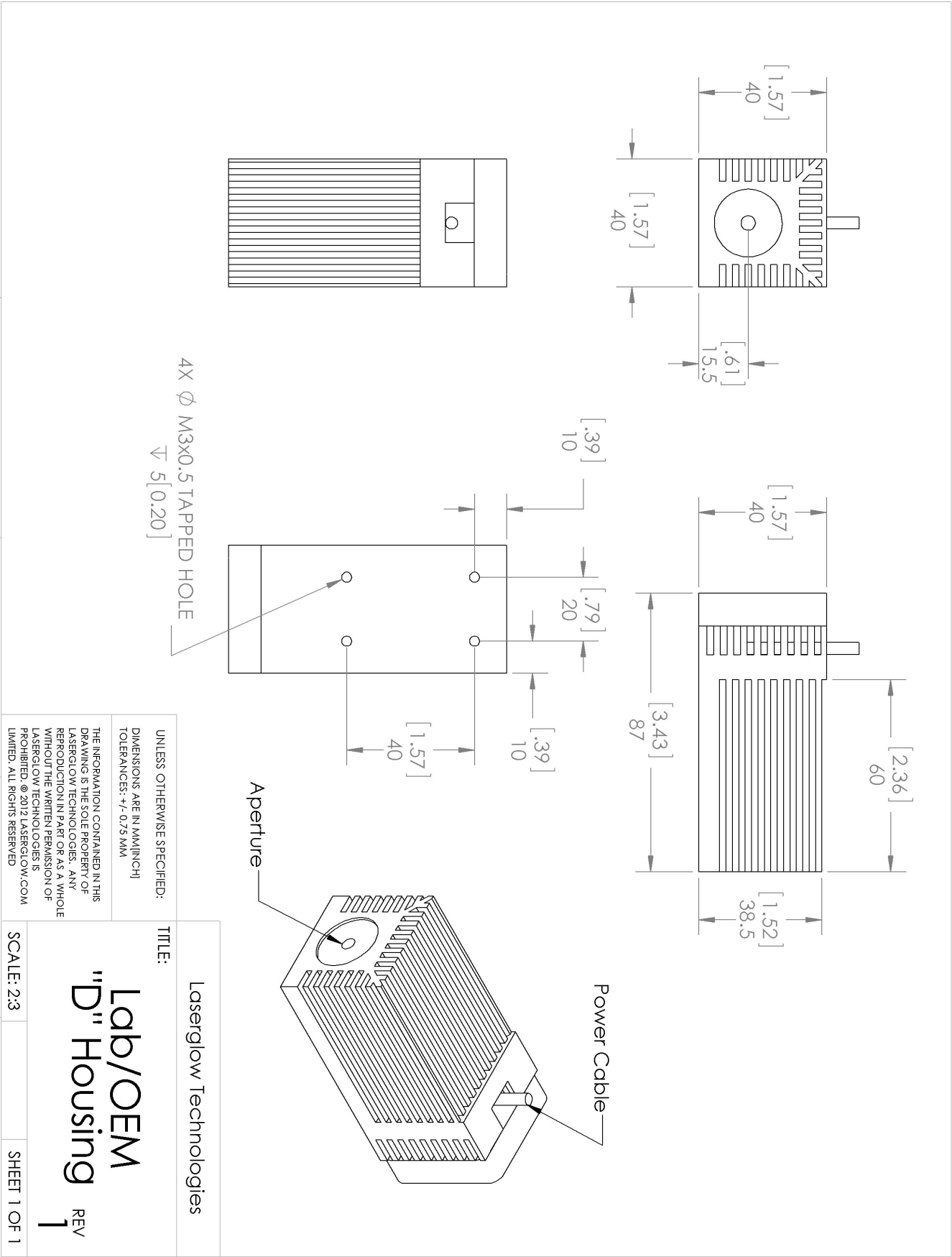
The model you have selected (C531505FX) requires the following safety label(s):



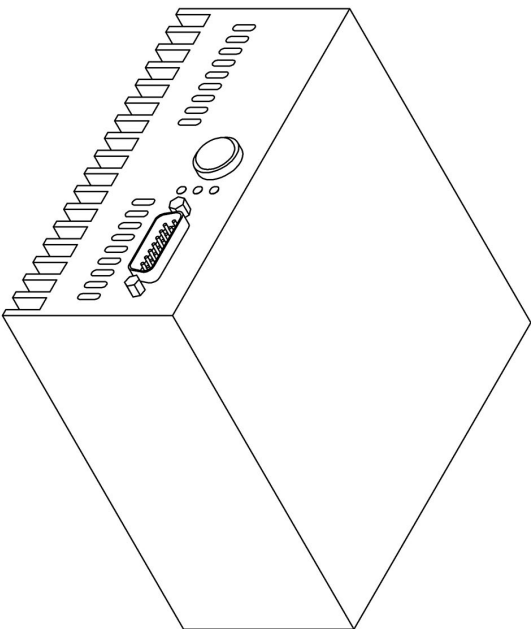
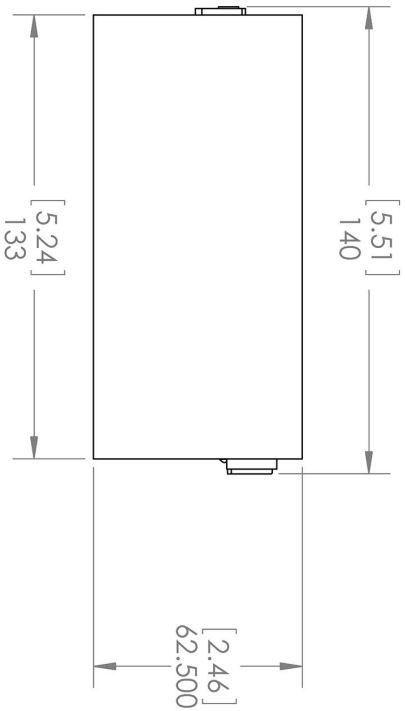
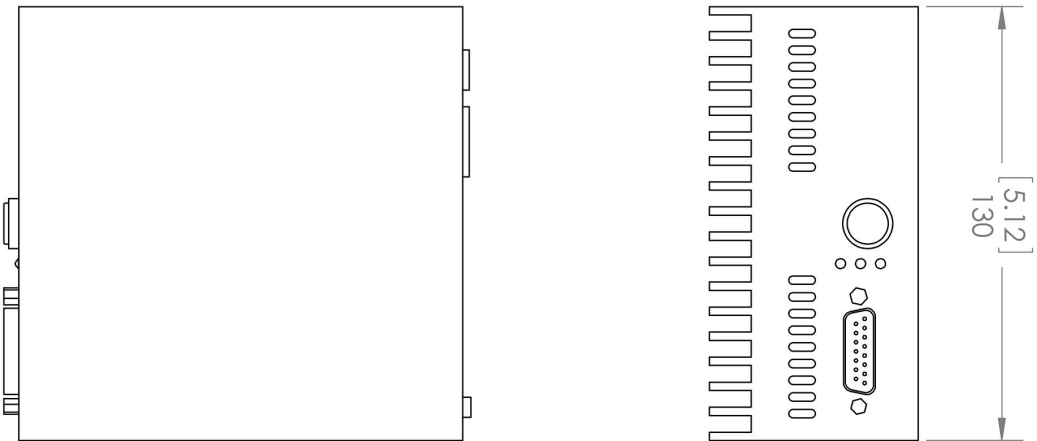
**Maximum Power Output:** < 500 mW  
**Wavelength:** 532 nm

This device is compliant with 21 CFR1040.10 and 1040.11  
LASERGLOW.COM LIMITED, 873 St. Clair Ave. W.  
Toronto, ON, Canada M6C 1C4  
Manufactured: 07-2012, Toronto, Canada

Dimensional Drawing - Laser Form Factor: D:



Dimensional Drawing - Power Supply Form Factor: SD:



UNLESS OTHERWISE SPECIFIED:  
DIMENSIONS ARE IN MM(INCH)  
TOLERANCES: +/- 0.75 MM

THE INFORMATION CONTAINED IN THIS  
DRAWING IS THE SOLE PROPERTY OF  
LASERGLOW TECHNOLOGIES. ANY  
REPRODUCTION IN PART OR AS A WHOLE  
WITHOUT THE WRITTEN PERMISSION OF  
LASERGLOW TECHNOLOGIES IS  
PROHIBITED. © 2012 LASERGLOW.COM  
LIMITED. ALL RIGHTS RESERVED

Laserglow Technologies

TITLE:

Power Supply  
SC/SD/SG




REV  
1

SCALE: 1:2

SHEET 1 OF 1

## Accessories:

The most popular accessories for model C531505FX are shown below. For additional details regarding these or other accessories please see our website or contact us directly.

Part Number	Description	
 AGF5327XX	LSG-532-NF-7 Fit-Over Safety Goggles 532nm Output: OD 7+ at 190-532 nm CE Certified Full Details: <a href="http://www.laserglow.com/AGF">www.laserglow.com/AGF</a>	
 TBK	Complete optics kits with breadboard mounting hardware. External modulators, variable attenuators, free-space fiber launch systems Full Details: <a href="http://www.laserglow.com/TBK">www.laserglow.com/TBK</a>	
 ACALBLC SX	Carrying Case-101 Lab/OEM - C or D/OEM or FDA Full Details: <a href="http://www.laserglow.com/ACA">www.laserglow.com/ACA</a>	Included With Laser

## FOR MORE INFORMATION PLEASE CONTACT:

LASERGLOW TECHNOLOGIES  
99 Ingram Dr. Unit B, North York, ON, Canada M6M2L7  
Tel. (416) 729-7976 Fax (716) 322-3510  
[sales@laserglow.com](mailto:sales@laserglow.com) [www.laserglow.com](http://www.laserglow.com)

E&OE: Data included in this sheet may be subject to change without notice.

Please confirm critical specifications with our staff prior to ordering.