

## Laserglow Product Datasheet

### LRD-0470 Collimated Diode Laser System

**Laserglow Part Number:**  
**D4B10B3FX**

#### Similar Products:

For information about the other lasers in this product family visit:

<http://www.laserglow.com/D4B>

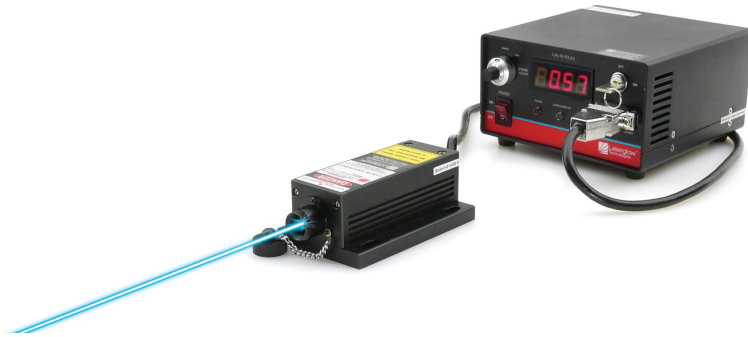
#### Ordering:

Order Online Now or Request Quote:

<http://www.laserglow.com/D4B10B3FX>

#### Series Specifications:

Nominal Wavelength	470 nm
Output Type	CW
Laser Source Type	Diode



#### Overview:

The LRD-0470 Cyanea™ Series of Collimated Diode (Semiconductor) Lasers are ideal for applications requiring a short wavelength of 470 nm and output power levels of 100 mW to 1000 mW with a high level of long-term output power stability and long operating lifetime at a very competitive cost.

This series has specifically been developed for optogenetics applications where channelrhodopsin 2 (ChR2) is used as the light-gated ion channel. The blue light activated ChR2 has a peak activation wavelength at 470 nm, thus making the LRD-0470 series ideal for ChR2-enabled neuron excitation.

The wavelength tolerance on this series is +/- 5nm when electronically modulating the device. The driver is available as a complete FDA-compliant system or as an O.E.M. component with significantly reduced dimensions.

Available with both on-board and remote on/off control as well as a wide array of output power and stability levels, Laserglow products are currently being used by some of the World's top universities and other prominent research facilities.

#### Key Features:

- Air cooled - no need for water cooling or external chiller
- Lightweight, compact design
- Efficient Diode Laser technology runs on standard AC power (85 - 264 V, 47 - 63 Hz)
- >10,000 hours continuous maintenance-free operating life
- FDA CDRH Compliant Class IIIa / Class IV enclosure
- 48-hour replacement coverage available for an additional fee on specific models

#### Package Includes:

- Laser Head
- Driver/Power Supply

- Power Cable
- BNC Connector (LabSpec models only)
- Keys, Safety Interlock
- Hard-shell Carrying Case

## Specifications:

This spec sheet has been generated specifically for part number D4B10B3FX, per your request, and data for the entire series is also displayed for your reference. The specs which are specific to D4B10B3FX have been highlighted below in **red + bold**.


Output Power (mW)	>100, >200, >300, >500, >800, <b>&gt;1000</b> , >1500
Output Power Stability (%RMS/4h)	<1, <b>&lt;3</b>
Central Wavelength (nm)	<b>468.5</b>
Wavelength Tolerance (+/- nm)	<b>5</b>
Divergence (mrad, full angle)	<1.4x0.2, <2.5x0.5
Beam Dimensions (mm, 1/e <sup>2</sup> )	1.5x3, 2.7x2.7
Warm-up Time (minutes)	<b>5</b>
Operating Temperature Range (°C)	<b>10 to 35</b>
Max. Analog Modulation Freq. (Hz)	<b>30000</b>
Max. TTL Modulation Freq. (Hz)	<b>30000</b>
Modulation Input Signal	<b>0-5 VDC</b>
Total Power Consumption (W)	<b>35</b>
Standard Warranty (months)	<b>12</b>
Weight of Product or Laser Head (kg)	<b>1.6</b>
Beam Height from Base Plate (mm)	<b>45</b>
Dimensions of Product or Laser Head (mm)	<b>211.5 (l) x 88 (w) x 74 (h)</b>

CW: All specifications are based on performance at full output power and after the specified warmup period. Output characteristics may change if the laser is run at a different power level.

Q-Switched: Specifications are based on the laser pulsing at the specified design frequency. Output characteristics may change if the laser is run at a different frequency.

**Power Supply Options:**

These lasers are available with several different power supply options. The model that you have selected is highlighted below, and any other options are shown for easy reference.

<div>FDA-Compliant LabSpec</div> <div></div>	Power Supply Type:	FF
	Input Power	85v to 264v
	Power Supply Weight (kg)	2.6
	Dimensions (mm)	268 (l) x 145 (w) x 106 (h)

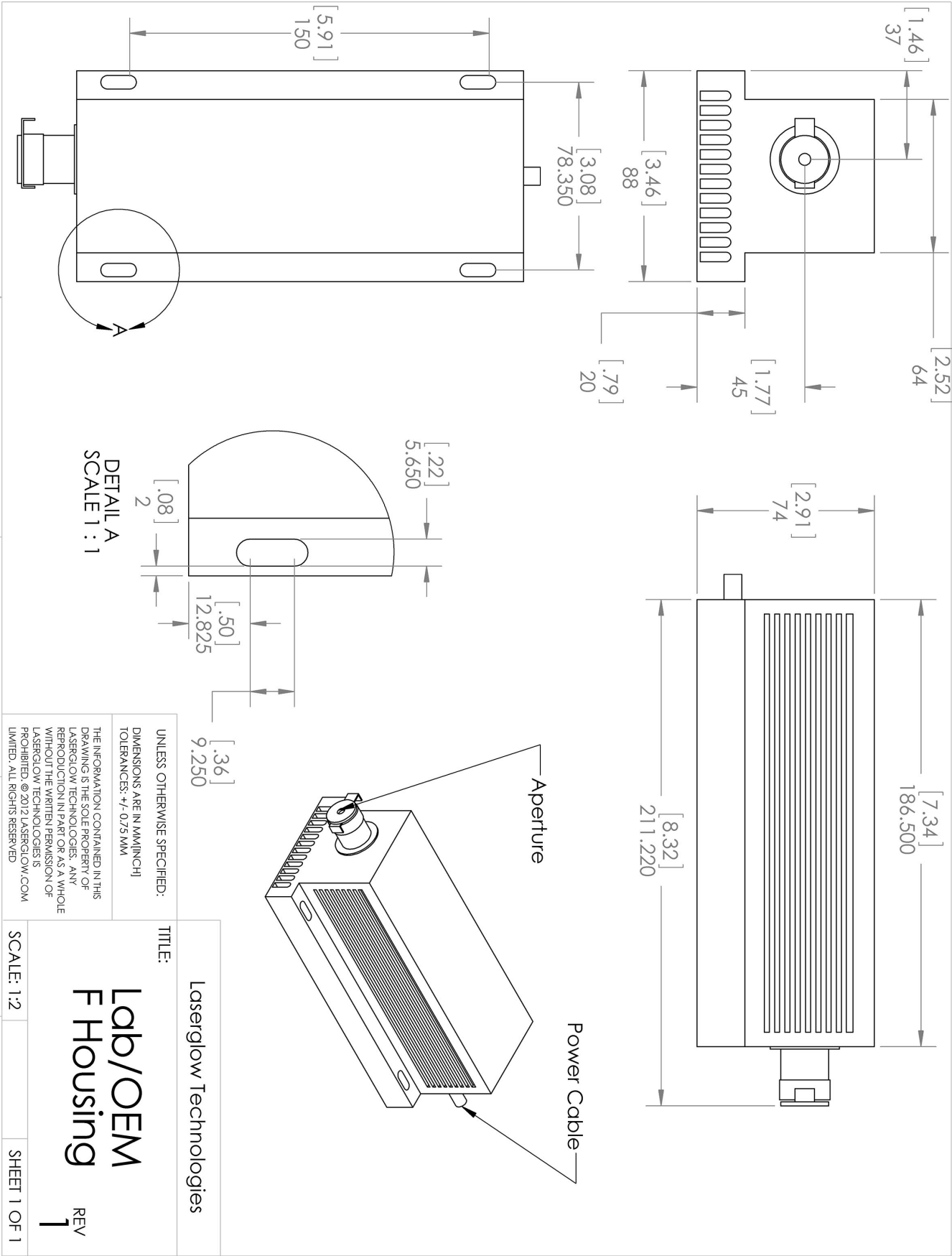
\*Power supply may not be exactly as shown, see dimensional drawings on next 2 pages.  
\*Dimensions for fiber-integrated (I\_) include laser head packaged inside.

**Regulatory Classification:**

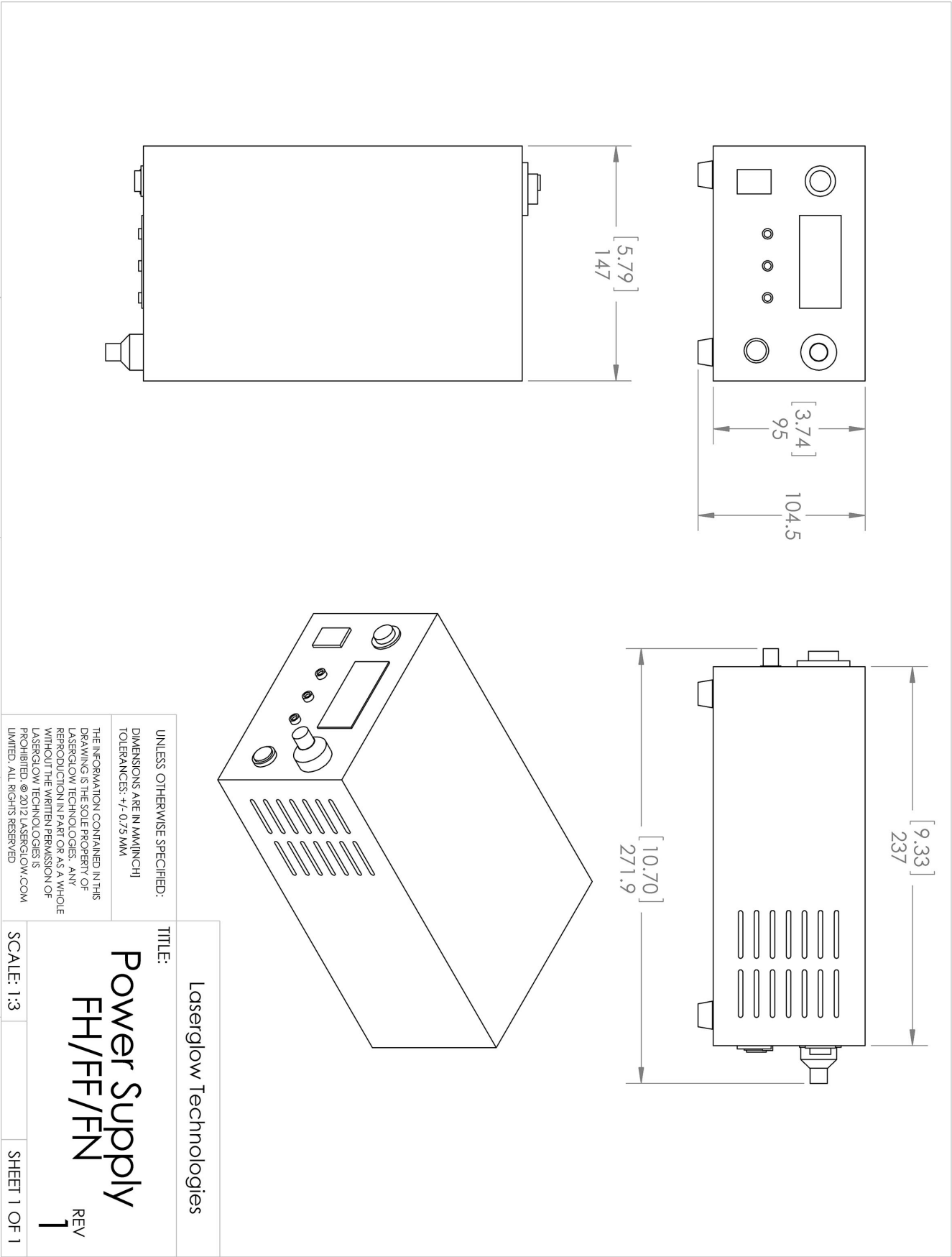
The model you have selected (D4B10B3FX) requires the following safety label(s):



Dimensional Drawing - Laser Form Factor: FD:











Dimensional Drawing - Power Supply Form Factor: FF:



## Accessories:

The most popular accessories for model D4B10B3FX are shown below. For additional details regarding these or other accessories please see our website or contact us directly.

Part Number	Description	
 AFS2002XX	Armored Fiber With SMA 905 Connectors 200um Core Multimode 2 m length Full Details: <a href="http://www.laserglow.com/AFS">www.laserglow.com/AFS</a>	
 AFF2002XX	Armored Fiber With FC/PC Connectors 200um Core Multimode 2m length Full Details: <a href="http://www.laserglow.com/AFF">www.laserglow.com/AFF</a>	
 AGF5322XX	LSG-532-NF-2 Fit-Over Safety Goggles 532nm Output: OD 2+ at 400-532 nm CE Certified Full Details: <a href="http://www.laserglow.com/AGF">www.laserglow.com/AGF</a>	
 ACSVISHXA	SMA-905 Fiber Coupler/Collimator for visible spectrum wavelengths (400 to 700 nm) (installed and aligned) 11mm diameter input lens Full Details: <a href="http://www.laserglow.com/ACS">www.laserglow.com/ACS</a>	
 ACFVISHXA	FC/PC Fiber Coupler/Collimator for visible spectrum wavelengths (400 to 700 nm) (installed and aligned) 11mm diameter input lens Full Details: <a href="http://www.laserglow.com/ACF">www.laserglow.com/ACF</a>	
 ACALBHFXX	Carrying Case-103 Holds Lab/OEM H, F and O size Standard/LabSpec laser Full Details: <a href="http://www.laserglow.com/ACA">www.laserglow.com/ACA</a>	
 ACALBMXXX	Carrying Case-102 Holds Lab/OEM M, R and S size, standard or LabSpec laser Full Details: <a href="http://www.laserglow.com/ACA">www.laserglow.com/ACA</a>	Included With Laser
 ACALBHFXX	Carrying Case-103 Holds Lab/OEM H, F and O size Standard/LabSpec laser Full Details: <a href="http://www.laserglow.com/ACA">www.laserglow.com/ACA</a>	Included With Laser

## FOR MORE INFORMATION PLEASE CONTACT:

LASERGLOW TECHNOLOGIES  
 99 Ingram Dr. Unit B, North York, ON, Canada M6M2L7  
 Tel. (416) 729-7976 Fax (716) 322-3510  
[sales@laserglow.com](mailto:sales@laserglow.com) [www.laserglow.com](http://www.laserglow.com)

E&OE: Data included in this sheet may be subject to change without notice.

Please confirm critical specifications with our staff prior to ordering.