

Aquarius Blue Laser Pointer



Series Specifications:

Nominal Wavelength	473 nm
Output Type	Pulsed (700 Hz)
Laser Source Type	DPSS

Overview:

This blue laser pointer will captivate audiences wherever you take it, whether at home with friends or at a presentation conference with colleagues. Blue laser pointers are still so rare that few have ever seen one. Be one of the first to own this unique product but don't blame us if you keep getting asked how you got one!

Key Features:

- *Starting at: \$349*
- *Output Power: 2 mW - 4.9 mW (Varies with model)*
- *Expected Life: 5000 hours*
- *Wavelength: 473 nm (blue)*
- *Key Feature: Most technologically advanced portable laser*
- *Package Includes: Portable laser, aluminum carrying case, instructions/warranty.*
- *Casing: Hard anodized machined aluminum*
- *Safety Info: Complies with Class IIIa regulations*
- *Duty Cycle: 90 sec. on/20 sec. off*

Specifications:

This spec sheet has been generated specifically for part number GAP-GAP, per your request, and data for the entire series is also displayed for your reference. The specs which are specific to GAP-GAP have been highlighted below in **red + bold**.

Laser Form Factor	GAP
Output Power (mW)	<2
FDA Safety Class	IIIa
Central Wavelength (nm)	472.58
Divergence (mrad, full angle)	<1
Beam Dimensions (mm, 1/e ²)	1
Transverse Mode	Near TEM00
Longitudinal Modes	Multiple
Approximate Peak Power (W)	3
Operating Temperature Range (°C)	20 to 35
Storage Temperature Range (°C)	-10 to 50
Total Power Consumption (W)	3
Max. Power Input Duty Cycle	90 sec. on/20 sec. off
Cooling Method	Passive Air
Standard Warranty (months)	6
MTTF (operational hours)	5000
Weight of Product or Laser Head (kg)	0.1
Dimensions of Product or Laser Head (mm)	150 (l) x 16.5 (d)
Power Supply	1 x CR2 Battery

CW: All specifications are based on performance at full output power and after the specified warmup period. Output characteristics may change if the laser is run at a different power level.

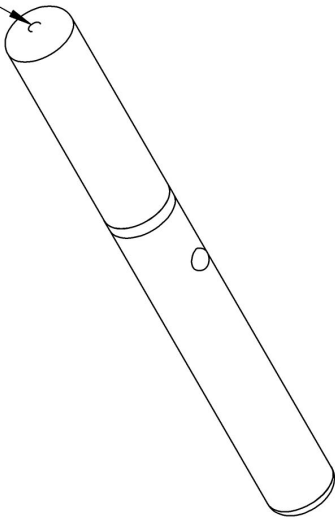
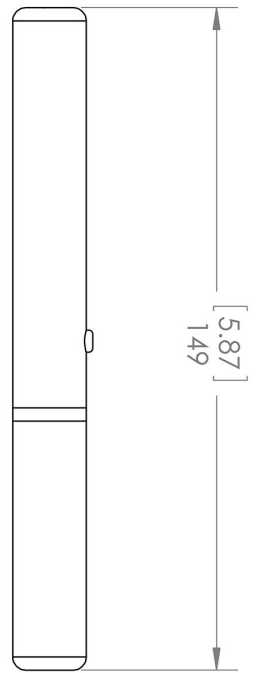
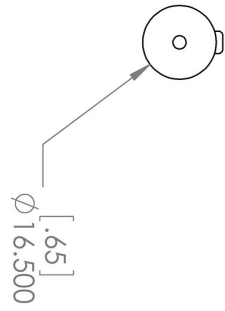
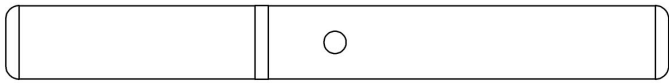
Q-Switched: Specifications are based on the laser pulsing at the specified design frequency. Output characteristics may change if the laser is run at a different frequency.

Regulatory Classification:

The model you have selected (GAP-GAP) requires the following safety label(s):



Dimensional Drawing - Laser Form Factor: GAP:



Aperture

UNLESS OTHERWISE SPECIFIED:
DIMENSIONS ARE IN MM(INCH)
TOLERANCES: +/- 0.75 MM

THE INFORMATION CONTAINED IN THIS
DRAWING IS THE SOLE PROPERTY OF
LASERGLOW TECHNOLOGIES. ANY
REPRODUCTION IN PART OR AS A WHOLE
WITHOUT THE WRITTEN PERMISSION OF
LASERGLOW TECHNOLOGIES IS
PROHIBITED. © 2012 LASERGLOW.COM
LIMITED. ALL RIGHTS RESERVED

Laserglow Technologies





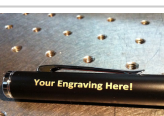

TITLE:
**Aquarius /
Rigel HV /
Electra / Hydra**
REV
1

SCALE: 2:3

SHEET 1 OF 1

Accessories:

The most popular accessories for model GAP-GAP are shown below. For additional details regarding these or other accessories please see our website or contact us directly.

Part Number	Description	
 AGS5327XX	LSG-532-NS-7 Sport Laser Safety Goggles 532nm Output: OD 7+ at 190-532 nm CE Certified Full Details: www.laserglow.com/AGS	
 AGF5322XX	LSG-532-NF-2 Fit-Over Safety Goggles 532nm Output: OD 2+ at 400-532 nm CE Certified Full Details: www.laserglow.com/AGF	
 AGS5322XX	LSG-532-NS-2 Sport Laser Safety Goggles 532nm Output: OD 2+ at 400-532 nm CE Certified Full Details: www.laserglow.com/AGS	
 AGF5327XX	LSG-532-NF-7 Fit-Over Safety Goggles 532nm Output: OD 7+ at 190-532 nm CE Certified Full Details: www.laserglow.com/AGF	
 ASE001XXX	Engraving On Laser Pointer Max. 2 lines 45 characters each Full Details: www.laserglow.com/ASE	
 ACAGAQ1XX	Carrying Case-7 Aquarius/Electra/Rigel HV/Hydra Full Details: www.laserglow.com/ACA	Included With Laser

FOR MORE INFORMATION PLEASE CONTACT:

LASERGLOW TECHNOLOGIES
873 St. Clair Ave West, Toronto, ON, Canada M6C1C4
Tel. (416) 729-7976 Fax (480) 247-4864
sales@laserglow.com www.laserglow.com

E&OE: Data included in this sheet may be subject to change without notice.
Please confirm critical specifications with our staff prior to ordering.