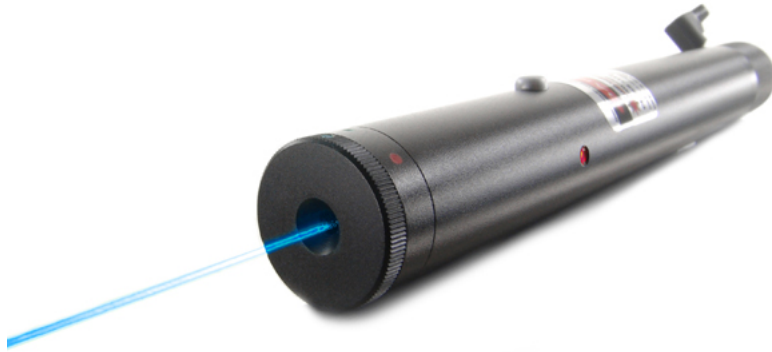


Laserglow Product Datasheet

Aquarius Pro Portable Blue Laser Module



Series Specifications:

Nominal Wavelength	473 nm
Output Type	CW
Laser Source Type	DPSS

Overview:

Laserglow's Aquarius Pro series of blue portable lasers are a true achievement in portable laser technology. These lasers incorporate the same technology found in bench-top lab lasers into a compact battery-powered housing. Pulsed at 700Hz to achieve stable high output power without the use of bulky cooling systems, the Aquarius Pro allows for a long runtime on a single CR-123A battery.

Key Features:

- *Starting at: \$599*
- *Output Power: Varies with model*
- *Expected Life: 5000 hours*
- *Wavelength: 473 nm (blue)*
- *Key Feature: Most technologically advanced portable laser*
- *Package Includes: Portable laser, aluminum carrying case, instructions/warranty.*
- *Casing: Hard anodized machined aluminum*
- *Safety Info: Class IIIb*
- *Duty Cycle: 120 sec. on/20 sec. off*

U.S. Orders: Class IIIb versions of this laser cannot be shipped to the United States. Consider the [473 nm laboratory laser](#) which provides similar output but is not portable. [Click here for more information.](#)

Canadian Orders: The Class IIIb versions of this laser can be shipped within Canada to Canadian companies who provide the following documentation:

- A valid LSO Certificate with a certified Laser Safety Officer on the premises
- A company purchase order
- A signed Declaration of Use. Please contact our sales department for this form

Specifications:

This spec sheet has been generated specifically for part number GAQ-GAQ, per your request, and data for the entire series is also displayed for your reference. The specs which are specific to GAQ-GAQ have been highlighted below in **red + bold**.

Output Power (mW)	<2
Central Wavelength (nm)	472.58
Divergence (mrad, full angle)	<1
Beam Dimensions (mm, 1/e ²)	1
Approximate Peak Power (W)	3
Operating Temperature Range (°C)	20 to 35
Total Power Consumption (W)	3
Max. Power Input Duty Cycle	120 sec. on/20 sec. off
Standard Warranty (months)	6
MTTF (operational hours)	5000
Weight of Product or Laser Head (kg)	0.18
Dimensions of Product or Laser Head (mm)	199 (l) x 23 (d)
Power Supply	1 x CR2 Battery

CW: All specifications are based on performance at full output power and after the specified warmup period. Output characteristics may change if the laser is run at a different power level.

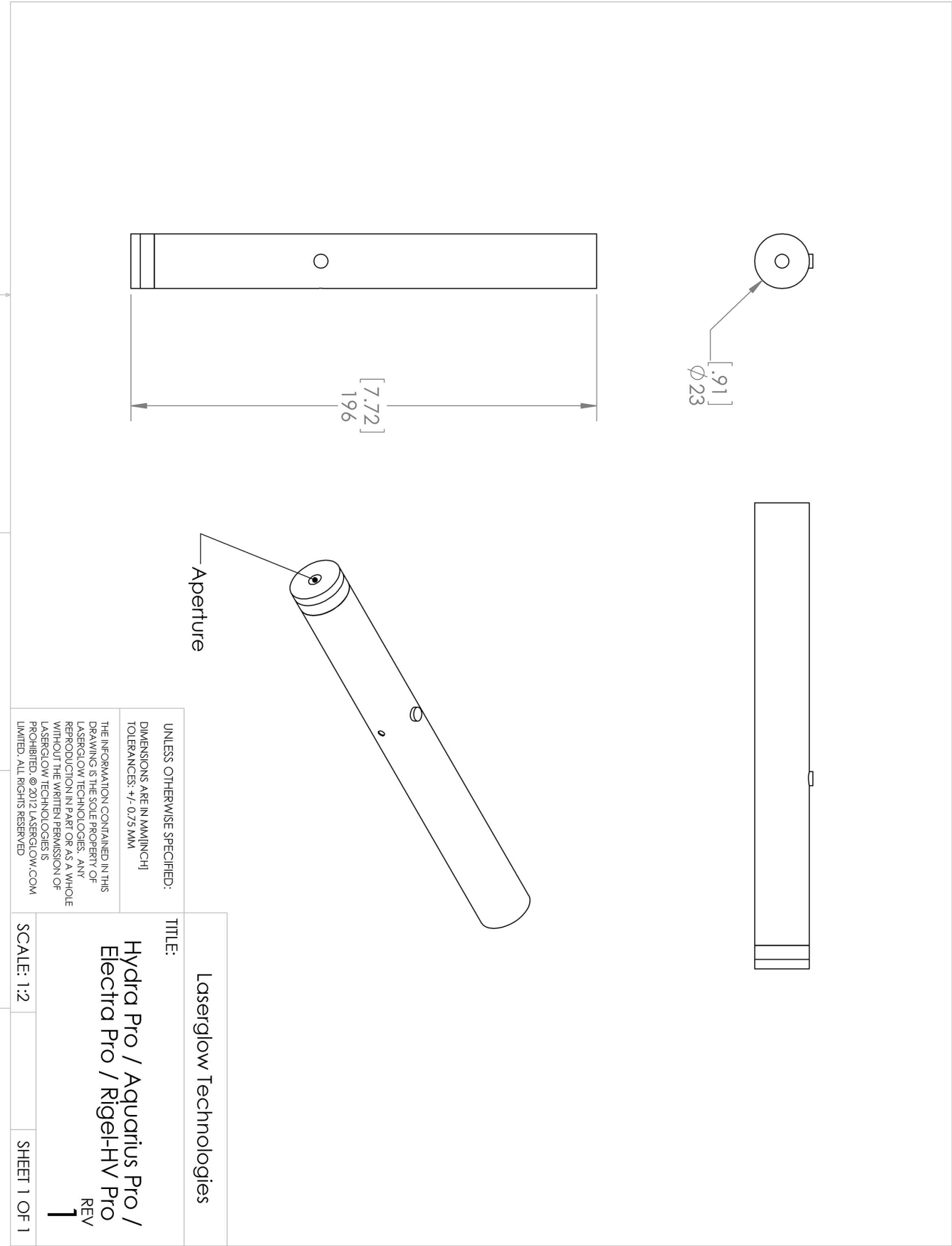
Q-Switched: Specifications are based on the laser pulsing at the specified design frequency. Output characteristics may change if the laser is run at a different frequency.

Regulatory Classification:

The model you have selected (GAQ-GAQ) requires the following safety label(s):






Dimensional Drawing - Laser Form Factor: GAQ:



Accessories:

The most popular accessories for model GAQ-GAQ are shown below. For additional details regarding these or other accessories please see our website or contact us directly.

Part Number	Description	
 AGF5322XX	LSG-532-NF-2 Fit-Over Safety Goggles 532nm Output: OD 2+ at 400-532 nm CE Certified Full Details: www.laserglow.com/AGF	
 AGS5322XX	LSG-532-NS-2 Sport Laser Safety Goggles 532nm Output: OD 2+ at 400-532 nm CE Certified Full Details: www.laserglow.com/AGS	
 ACAGAQPXX	Carrying Case-6 AquariusPro/ElectraPro/Rigel HVPro/HydraPro Full Details: www.laserglow.com/ACA	Included With Laser

FOR MORE INFORMATION PLEASE CONTACT:

LASERGLOW TECHNOLOGIES
99 Ingram Dr. Unit B, North York, ON, Canada M6M2L7
Tel. (416) 729-7976 Fax (716) 322-3510
sales@laserglow.com www.laserglow.com

E&OE: Data included in this sheet may be subject to change without notice.

Please confirm critical specifications with our staff prior to ordering.