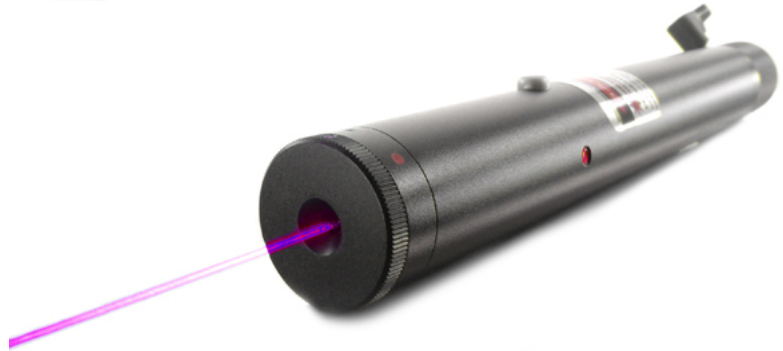


## Electra Pro Portable Violet Laser Module



### Series Specifications:

Nominal Wavelength	405 nm
Output Type	CW
Laser Source Type	Diode

### Overview:

The shortest wavelength available in a portable laser, the Electra Pro produces laser light very close to the ultraviolet part of the visible spectrum at 405 nm. The unique properties of this laser include the ability to excite fluorescent and phosphorescent materials. The Electra Pro is a reliable near-UV portable light source for field work.

### Key Features:

- *Starting at: \$839*
- *Output Power: Varies with model*
- *Expected Life: 5000 hours*
- *Wavelength: 405 nm (violet)*
- *Key Feature: Violet beam causes fluorescence effect in various materials*
- *Package Includes: Portable laser, aluminum frame carrying case, instructions/warranty.*
- *Casing: Hard anodized machined aluminum*
- *Safety Info: Class IV*
- *Duty Cycle: 100%*

**U.S. Orders:** The Class IIIb versions of this laser cannot be shipped to the United States. If you live in the USA please choose a Class IIIa model, or consider the [405 nm laboratory laser](#) which provides similar output but is not portable. [Click here for more information.](#)

**Canadian Orders:** The Class IIIb versions of this laser can be shipped within Canada to Canadian companies who provide the following documentation:

- A valid LSO Certificate with a certified Laser Safety Officer on the premises
- A company purchase order
- A signed Declaration of Use. Please contact our sales department for this form

## Specifications:

This spec sheet has been generated specifically for part number GEL-GAQ, per your request, and data for the entire series is also displayed for your reference. The specs which are specific to GEL-GAQ have been highlighted below in **red + bold**.

Laser Form Factor	<b>GAQ</b>
Output Power (mW)	<b>&lt;5, &gt;200, &gt;250</b>
FDA Safety Class	<b>IIIa, IIIb</b>
Central Wavelength (nm)	<b>405</b>
Divergence (mrad, full angle)	<b>&lt;0.5</b>
Beam Dimensions (mm, 1/e <sup>2</sup> )	<b>3.5</b>
Transverse Mode	<b>Near TEM00</b>
Longitudinal Modes	<b>Multiple</b>
Approximate Peak Power (W)	<b>5, 240, 290</b>
Operating Temperature Range (°C)	<b>20 to 35</b>
Storage Temperature Range (°C)	<b>-10 to 50</b>
Total Power Consumption (W)	<b>3, 7, 8</b>
Max. Power Input Duty Cycle	<b>100%</b>
Cooling Method	<b>Passive Air</b>
Standard Warranty (months)	<b>6</b>
MTTF (operational hours)	<b>5000</b>
Weight of Product or Laser Head (kg)	<b>0.18</b>
Dimensions of Product or Laser Head (mm)	<b>199 (l) x 23 (d)</b>
Power Supply	<b>2 x CR123A Batteries</b>

CW: All specifications are based on performance at full output power and after the specified warmup period. Output characteristics may change if the laser is run at a different power level.

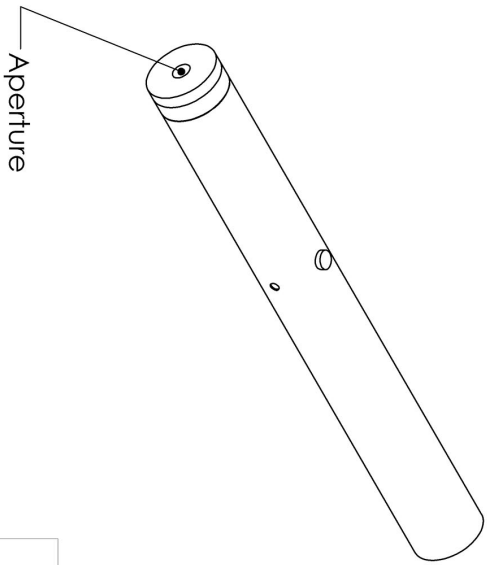
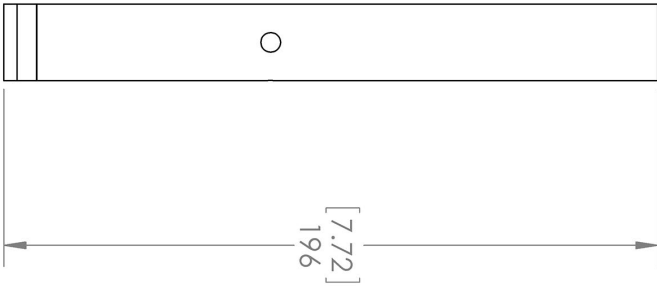
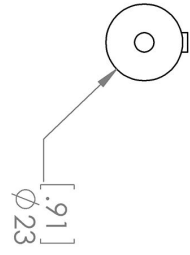
Q-Switched: Specifications are based on the laser pulsing at the specified design frequency. Output characteristics may change if the laser is run at a different frequency.

## Regulatory Classification:

The model you have selected (GEL-GAQ) requires the following safety label(s):



**Dimensional Drawing - Laser Form Factor: GAQ:**








UNLESS OTHERWISE SPECIFIED:  
DIMENSIONS ARE IN MM(INCH)  
TOLERANCES: +/- 0.275 MM

THE INFORMATION CONTAINED IN THIS DRAWING IS THE SOLE PROPERTY OF LASERGLLOW TECHNOLOGIES. ANY REPRODUCTION IN PART OR AS A WHOLE WITHOUT THE WRITTEN PERMISSION OF LASERGLLOW TECHNOLOGIES IS PROHIBITED. © 2012 LASERGLLOW.COM LIMITED. ALL RIGHTS RESERVED

<p><b>Laserglow Technologies</b></p>		
<p>TITLE: <b>Hydra Pro / Aquarius Pro / Electra Pro / Rigel-HV Pro</b></p>		
<p>SCALE: 1:2</p>	<p>REV <b>1</b></p>	
<p>SHEET 1 OF 1</p>		

## Accessories:

The most popular accessories for model GEL-GAQ are shown below. For additional details regarding these or other accessories please see our website or contact us directly.

Part Number	Description	
 AGF5322XX	LSG-532-NF-2 Fit-Over Safety Goggles 532nm Output: OD 2+ at 400-532 nm CE Certified Full Details: <a href="http://www.laserglow.com/AGF">www.laserglow.com/AGF</a>	
 AGS5322XX	LSG-532-NS-2 Sport Laser Safety Goggles 532nm Output: OD 2+ at 400-532 nm CE Certified Full Details: <a href="http://www.laserglow.com/AGS">www.laserglow.com/AGS</a>	
 AGF5327XX	LSG-532-NF-7 Fit-Over Safety Goggles 532nm Output: OD 7+ at 190-532 nm CE Certified Full Details: <a href="http://www.laserglow.com/AGF">www.laserglow.com/AGF</a>	
 ACAGAQPXX	Carrying Case-6 AquariusPro/ElectraPro/Rigel HVPro/HydraPro Full Details: <a href="http://www.laserglow.com/ACA">www.laserglow.com/ACA</a>	Included With Laser
 ASE001XXX	Engraving On Laser Pointer Max. 2 lines 45 characters each Full Details: <a href="http://www.laserglow.com/ASE">www.laserglow.com/ASE</a>	

## FOR MORE INFORMATION PLEASE CONTACT:

LASERGLOW TECHNOLOGIES  
99 Ingram Dr. Unit B, North York, ON, Canada M6M2L7  
Tel. (416) 729-7976 Fax (716) 322-3510  
[sales@laserglow.com](mailto:sales@laserglow.com) [www.laserglow.com](http://www.laserglow.com)

E&OE: Data included in this sheet may be subject to change without notice.

Please confirm critical specifications with our staff prior to ordering.