

Laserglow Product Datasheet

Electra Pro Portable Violet Laser Module

Laserglow Part Number: GEL200XXX



This model is listed as **inactive** in our product database. Stock may be limited, and availability is subject to change without notice.

Similar Products:

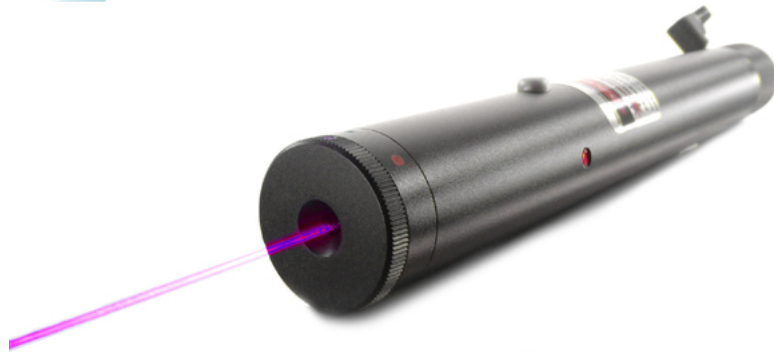
For information about the other lasers in this product family visit:

<http://www.laserglow.com/GEL>

Ordering:

Order Online Now or Request Quote:

<http://www.laserglow.com/GEL200XXX>



Series Specifications:

Nominal Wavelength	405 nm
Output Type	CW
Laser Source Type	Diode

Overview:

The shortest wavelength available in a portable laser, the Electra Pro produces laser light very close to the ultraviolet part of the visible spectrum at 405 nm. The unique properties of this laser include the ability to excite fluorescent and phosphorescent materials. The Electra Pro is a reliable near-UV portable light source for field work.

Key Features:

- *Starting at: \$839*
- *Output Power: Varies with model*
- *Expected Life: 5000 hours*
- *Wavelength: 405 nm (violet)*
- *Key Feature: Violet beam causes fluorescence effect in various materials*
- *Package Includes: Portable laser, aluminum frame carrying case, instructions/warranty.*
- *Casing: Hard anodized machined aluminum*
- *Safety Info: Class IV*
- *Duty Cycle: 100%*

U.S. Orders: The Class IIIb versions of this laser cannot be shipped to the United States. If you live in the USA please choose a Class IIIa model, or consider the [405 nm laboratory laser](#) which provides similar output but is not portable. [Click here for more information.](#)

Canadian Orders: The Class IIIb versions of this laser can be shipped within Canada to Canadian companies who provide the following documentation:

- A valid LSO Certificate with a certified Laser Safety Officer on the premises
- A company purchase order
- A signed Declaration of Use. Please contact our sales department for this form

Specifications:

This spec sheet has been generated specifically for part number GEL200XXX, per your request, and data for the entire series is also displayed for your reference. The specs which are specific to GEL200XXX have been highlighted below in **red + bold**.

Output Power (mW)	>200
Central Wavelength (nm)	405
Divergence (mrad, full angle)	<0.5
Beam Dimensions (mm, 1/e²)	3.5
Approximate Peak Power (W)	240
Operating Temperature Range (°C)	20 to 35
Total Power Consumption (W)	7
Max. Power Input Duty Cycle	100%
Standard Warranty (months)	6
MTTF (operational hours)	5000
Weight of Product or Laser Head (kg)	0.18
Dimensions of Product or Laser Head (mm)	199 (l) x 23 (d)
Power Supply	2 x CR123A Batteries

CW: All specifications are based on performance at full output power and after the specified warmup period. Output characteristics may change if the laser is run at a different power level.

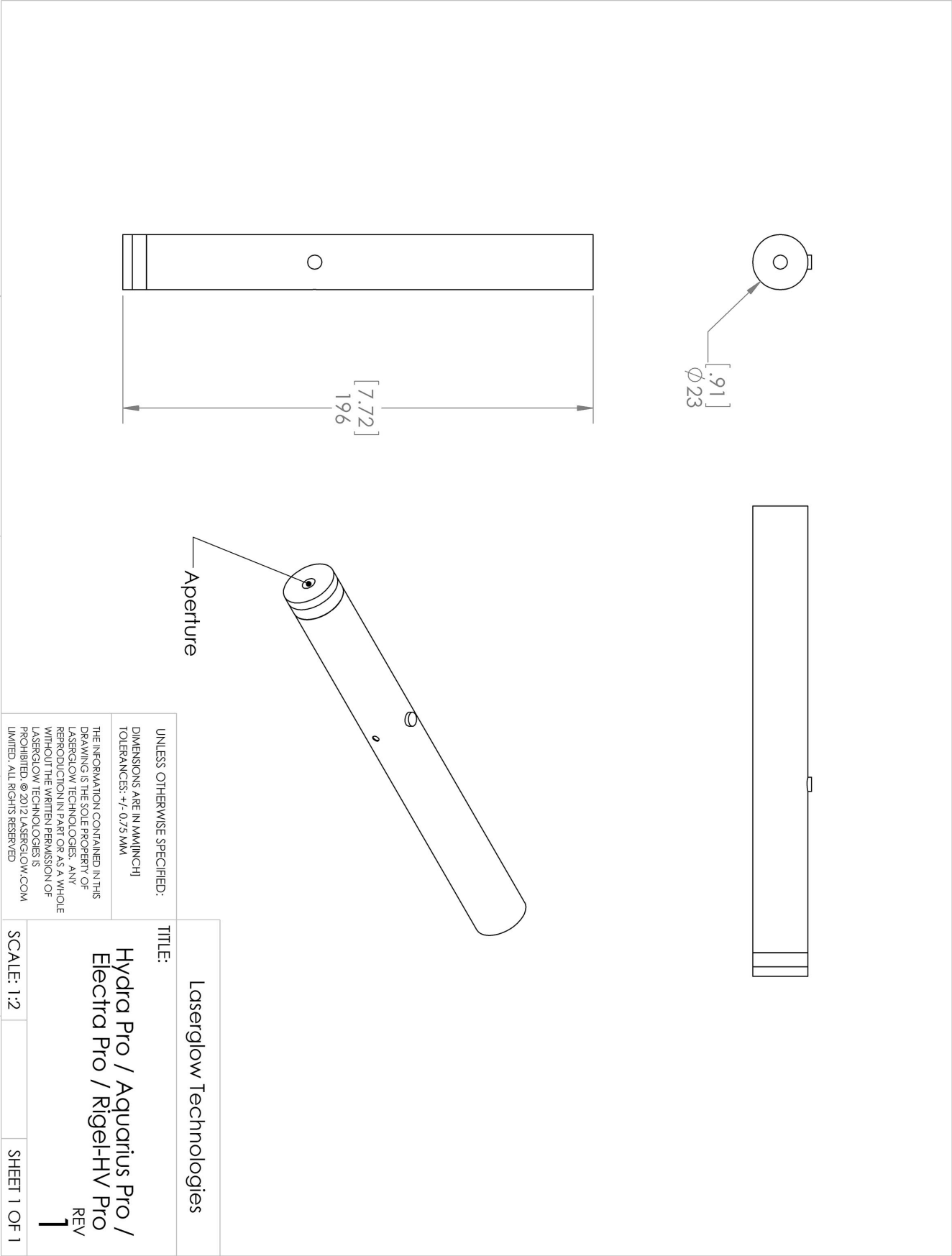
Q-Switched: Specifications are based on the laser pulsing at the specified design frequency. Output characteristics may change if the laser is run at a different frequency.

Regulatory Classification:

The model you have selected (GEL200XXX) requires the following safety label(s):






Dimensional Drawing - Laser Form Factor: GAQ:



Accessories:

The most popular accessories for model GEL200XXX are shown below. For additional details regarding these or other accessories please see our website or contact us directly.

Part Number	Description	
 AGF5322XX	LSG-532-NF-2 Fit-Over Safety Goggles 532nm Output: OD 2+ at 400-532 nm CE Certified Full Details: www.laserglow.com/AGF	
 AGS5322XX	LSG-532-NS-2 Sport Laser Safety Goggles 532nm Output: OD 2+ at 400-532 nm CE Certified Full Details: www.laserglow.com/AGS	
 AGF5327XX	LSG-532-NF-7 Fit-Over Safety Goggles 532nm Output: OD 7+ at 190-532 nm CE Certified Full Details: www.laserglow.com/AGF	
 ACAGAQPXX	Carrying Case-6 AquariusPro/ElectraPro/Rigel HVPro/HydraPro Full Details: www.laserglow.com/ACA	Included With Laser

FOR MORE INFORMATION PLEASE CONTACT:

LASERGLOW TECHNOLOGIES
99 Ingram Dr. Unit B, North York, ON, Canada M6M2L7
Tel. (416) 729-7976 Fax (716) 322-3510
sales@laserglow.com www.laserglow.com

E&OE: Data included in this sheet may be subject to change without notice.

Please confirm critical specifications with our staff prior to ordering.