

Galileo Green Laser Pointer

Laserglow Part Number: GGA005XXX



Similar Products:

For information about the other lasers in this product family visit:

<http://www.laserglow.com/GGA>

Ordering:

Order Online Now or Request Quote:

<http://www.laserglow.com/GGA005XXX>



Series Specifications:

Nominal Wavelength	532 nm
Output Type	CW
Laser Source Type	DPSS

Overview:

The Galileo is the latest in functionality, reliability and output power stability. The click-on, click-off switch allows hands-free operation and easy use when continuous operation is required. The miniature heat sink means that the output will not drop during long operating periods. A fresh, high-capacity single lithium battery will keep this unit running for up to 2 hours! The Galileo is ideal for alignment, astronomy, and all other continuous use applications.

All of Laserglow's green laser pointers are IR-filtered for safety and employ APC technology to maintain constant output power. APC (Automatic Power Control) is a system that uses an optical feedback loop to ensure stable laser output.

Key Features:

- *Starting at: \$69*
- *Output Power:* 3.0 mW - 5.0 mW
- *Casing:* Hard Anodized black machined aluminum
- *Wavelength:* 532 nm (green)
- *Key Feature:* 100% continuous operation, click-on/click-off
- *Package Includes:* Portable laser, standard-capacity battery, carrying case, instructions/warranty.
- *Safety Info:* Complies with Class IIIa regulations.
- *Duty Cycle:* 100%

Quality, safety, unique features and range make Laserglow the leader in green pointers. [Learn more here.](#)

Specifications:

This spec sheet has been generated specifically for part number GGA005XXX, per your request, and data for the entire series is also displayed for your reference. The specs which are specific to GGA005XXX have been highlighted below in **red + bold**.

Laser Form Factor	GGA
Output Power (mW)	<5
FDA Safety Class	IIIa
Central Wavelength (nm)	531.65
Divergence (mrad, full angle)	<1.2
Beam Dimensions (mm, 1/e ²)	1.5
Transverse Mode	TEM00
Longitudinal Modes	Multiple
Operating Temperature Range (°C)	15 to 35
Storage Temperature Range (°C)	-10 to 50
Total Power Consumption (W)	2
Max. Power Input Duty Cycle	100%
Cooling Method	Passive Air
Standard Warranty (months)	6
MTTF (operational hours)	5000
Weight of Product or Laser Head (kg)	0.08
Dimensions of Product or Laser Head (mm)	118 (l) x 20 (d)
Power Supply	1 x CR123A Battery

CW: All specifications are based on performance at full output power and after the specified warmup period. Output characteristics may change if the laser is run at a different power level.

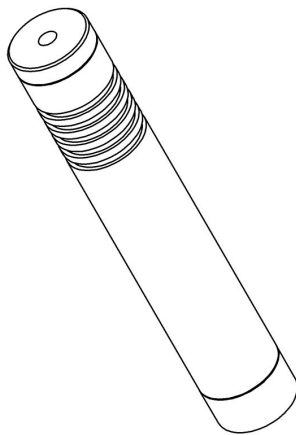
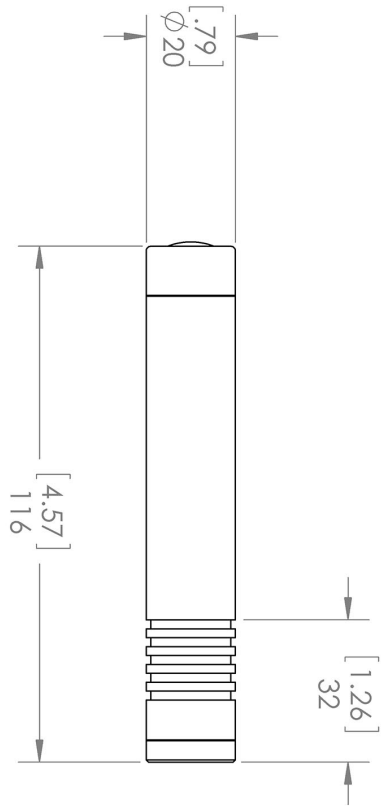
Q-Switched: Specifications are based on the laser pulsing at the specified design frequency. Output characteristics may change if the laser is run at a different frequency.

Regulatory Classification:

The model you have selected (GGA005XXX) requires the following safety label(s):






Dimensional Drawing - Laser Form Factor: GGA:



Laserglow Technologies	
TITLE:	
Galileo	
UNLESS OTHERWISE SPECIFIED: DIMENSIONS ARE IN MILLI (INCH) TOLERANCES: +/- 0.075 MM	
THE INFORMATION CONTAINED IN THIS DRAWING IS THE SOLE PROPERTY OF LASERGLLOW TECHNOLOGIES. ANY REPRODUCTION IN PART OR AS A WHOLE WITHOUT THE WRITTEN PERMISSION OF LASERGLLOW TECHNOLOGIES IS PROHIBITED. © 2012 LASERGLLOW.COM LIMITED. ALL RIGHTS RESERVED	
SCALE: 2:3	SHEET 1 OF 1
REV 1	

Accessories:

The most popular accessories for model GGA005XXX are shown below. For additional details regarding these or other accessories please see our website or contact us directly.

Part Number	Description	
 AGM00GXXX	Galileo GlowMount Tripod Adaptor 20.1mm ID Full Details: www.laserglow.com/AGM	
 ASE001XXX	Engraving On Laser Pointer Max. 2 lines 45 characters each Full Details: www.laserglow.com/ASE	
 ATPC30XXX	Mini Tripod Max height 175mm Full Details: www.laserglow.com/ATP	
 ATPC50XXX	Table Top Tripod Max height 600mm Full Details: www.laserglow.com/ATP	

FOR MORE INFORMATION PLEASE CONTACT:

LASERGLOW TECHNOLOGIES
99 Ingram Dr. Unit B, North York, ON, Canada M6M2L7
Tel. (416) 729-7976 Fax (716) 322-3510
sales@laserglow.com www.laserglow.com

E&OE: Data included in this sheet may be subject to change without notice.

Please confirm critical specifications with our staff prior to ordering.