

Hercules Portable Green Laser Module



Laserglow Part Number: GHE550XXX

Similar Products:

For information about the other lasers in this product family visit:

<http://www.laserglow.com/GHE>

Ordering:

Order Online Now or Request Quote:

<http://www.laserglow.com/GHE550XXX>



Series Specifications:

Nominal Wavelength	532 nm
Output Type	CW
Laser Source Type	DPSS

Product may not be exactly as shown. See dimensional drawing (if available) for details.

Overview:

Laserglow's Hercules Series Portable laser provides unparalleled output power and stability in a portable, battery-operated device. Using a combination of forced-air and thermoelectric cooling the Hercules operates at a 100% duty cycle either on batteries or using an external power supply (sold separately).

Key Features:

- **Starting at: \$839**
- **Output Power:** 225 mW - 700 mW
- **Pump Diode:** 2.5 Watt
- **Diode Make:** nLight
- **Wavelength:** 532 nm (green)
- **Key Feature:** The most powerful constant-duty portable green laser in the world.
- **Package Includes:** Portable laser, aluminum framed carrying case, instructions/warranty.
- **Class IV lasers also include:** Free laser safety goggles.
- **Safety Info:** Class IIIb/IV
- **Duty Cycle:** 100%

U.S. Orders: This laser cannot be shipped to the United States. If you live in the USA you may consider the [532 nm laboratory laser](#), which provides similar output but is not portable. [Click here for more information.](#)

Canadian Orders: This laser can be shipped within Canada to Canadian companies who provide the following documentation:

- A valid LSO Certificate with a certified Laser Safety Officer on the premises
- A company purchase order
- A signed Declaration of Use. Please contact our sales department for this form

Specifications:

This spec sheet has been generated specifically for part number GHE550XXX, per your request, and data for the entire series is also displayed for your reference. The specs which are specific to GHE550XXX have been highlighted below in **red + bold**.

Laser Form Factor	GHE
Output Power (mW)	>225, >250, >275, >325, >350, >375, >450, >500, >550 , >650, >700
FDA Safety Class	IIIb, IV
Central Wavelength (nm)	531.65
Divergence (mrad, full angle)	<1.2
Beam Dimensions (mm, 1/e ²)	1.5
Transverse Mode	Near TEM00
Longitudinal Modes	Multiple
Warm-up Time (minutes)	2
Approximate Peak Power (W)	325, 375, 425, 475, 550, 600, 650 , 750, 800
Operating Temperature Range (°C)	15 to 35
Storage Temperature Range (°C)	-10 to 50
Max. TTL Modulation Freq. (Hz)	200
Modulation Input Signal	0-5 VDC
Total Power Consumption (W)	7, 8, 9 , 10
Max. Power Input Duty Cycle	100%
Cooling Method	TEC/Forced Air
Standard Warranty (months)	6
MTTF (operational hours)	5000
Weight of Laser Head (kg)	0.92
Laser Head Dimensions (mm)	389.4 (l) x 52.7 (d)
Power Supply	3 x D Batteries

CW: All specifications are based on performance at full output power and after the specified warmup period. Output characteristics may change if the laser is run at a different power level.

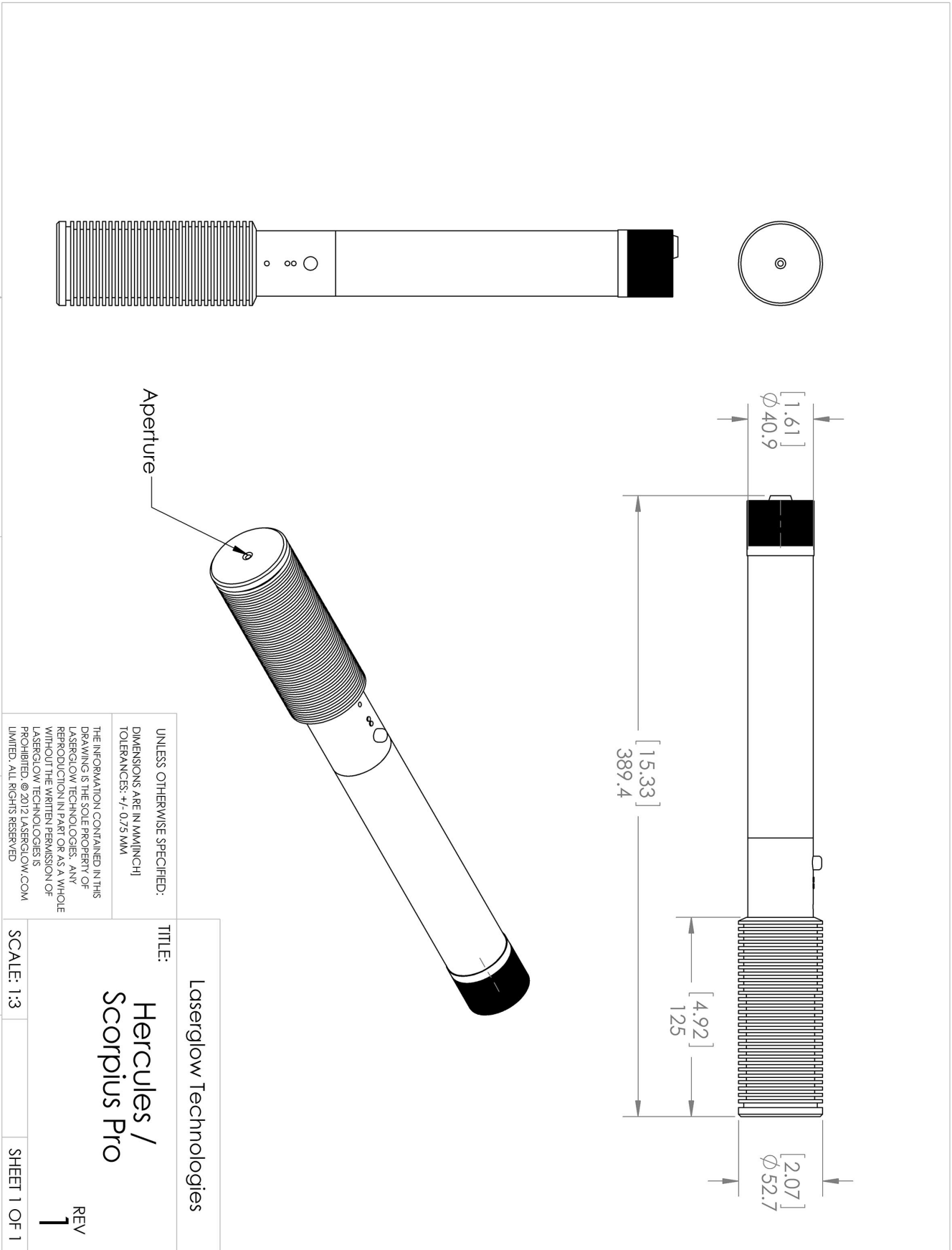
Q-Switched: Specifications are based on the laser pulsing at the specified design frequency. Output characteristics may change if the laser is run at a different frequency.

Regulatory Classification:

The model you have selected (GHE550XXX) requires the following safety label(s):











Dimensional Drawing - Laser Form Factor: GHE:



Accessories:

The most popular accessories for model GHE550XXX are shown below. For additional details regarding these or other accessories please see our website or contact us directly.

Part Number	Description	
 AGM00HXXX	Hercules GlowMount Tripod Adaptor Full Details: www.laserglow.com/AGM	
 AGS5327XX	LSG-532-NS-7 Sport Laser Safety Goggles 532nm Output: OD 7+ at 190-532 nm CE Certified Full Details: www.laserglow.com/AGS	
 ADR00HXXX	X10DR-Hercules 532nm Expansion: 10x Full Details: www.laserglow.com/ADR	
 AGF5327XX	LSG-532-NF-7 Fit-Over Safety Goggles 532nm Output: OD 7+ at 190-532 nm CE Certified Full Details: www.laserglow.com/AGF	
 AHA005XXX	Hercules 5.0A AC Power Adaptor Full Details: www.laserglow.com/AHA	
 ACAGHE1XX	Carrying Case-1 Hercules/Scorp Pro/Scorp-D Pro/VegaHV - STD Full Details: www.laserglow.com/ACA	Included With Laser
 ASE001XXX	Engraving On Laser Pointer Max. 2 lines 45 characters each Full Details: www.laserglow.com/ASE	
 AGF5327XX	LSG-532-NF-7 Fit-Over Safety Goggles 532nm Output: OD 7+ at 190-532 nm CE Certified Full Details: www.laserglow.com/AGF	Included With Laser

FOR MORE INFORMATION PLEASE CONTACT:

LASERGLOW TECHNOLOGIES
873 St. Clair Ave West, Toronto, ON, Canada M6C1C4
Tel. (416) 729-7976 Fax (480) 247-4864
sales@laserglow.com www.laserglow.com

E&OE: Data included in this sheet may be subject to change without notice.

Please confirm critical specifications with our staff prior to ordering.