

Libra Red Laser Pointer

Laserglow Part Number: GLI005XXX



Similar Products:

For information about the other lasers in this product family visit:

<http://www.laserglow.com/GLI>

Ordering:

Order Online Now or Request Quote:

<http://www.laserglow.com/GLI005XXX>

Series Specifications:

Nominal Wavelength	635 nm
Output Type	CW
Laser Source Type	Diode



Overview:

The Libra is Laserglow's entry into the red laser pointer market. The flat black finish gives the Libra a tactical, utilitarian look and feel.

With a 635 nm wavelength the Libra is approximately 2 times brighter than most other red pointers - which normally use a 650 nm or 660 nm diode, making the Libra the brightest Class IIIa red laser pointer available.

As with all Laserglow products the Libra employs the highest level of quality and craftsmanship to make this simply the best Class IIIa red laser pointer on the market.

Key Features:

- **Price: \$29**
- **Batteries:** 2 x "AAA" (Over 24 hours use with new batteries!)
- **Output Power:**
- **Wavelength:** 635 nm
- **Key Feature:** Flat black finish, no pocket clip
- **Casing:** Solid Brass
- **Package Includes:** Portable laser, batteries, carrying case, instructions/warranty.
- **Safety Info:** Complies with Class IIIa regulations.
- **Duty Cycle:** 100%

Specifications:

This spec sheet has been generated specifically for part number GLI005XXX, per your request, and data for the entire series is also displayed for your reference. The specs which are specific to GLI005XXX have been highlighted below in **red + bold**.

Laser Form Factor	GLI
Output Power (mW)	<5
FDA Safety Class	IIIa
Central Wavelength (nm)	635
Divergence (mrad, full angle)	<1.5
Beam Dimensions (mm, 1/e ²)	1.5x3.5
Transverse Mode	Near TEM00
Longitudinal Modes	Multiple
Storage Temperature Range (°C)	-10 to 50
Total Power Consumption (W)	1
Max. Power Input Duty Cycle	100%
Cooling Method	Passive Air
Standard Warranty (months)	6
MTTF (operational hours)	5000
Weight of Product or Laser Head (kg)	0.04
Dimensions of Product or Laser Head (mm)	124 (l) x 13 (d)
Power Supply	2 x AAA Batteries

CW: All specifications are based on performance at full output power and after the specified warmup period. Output characteristics may change if the laser is run at a different power level.

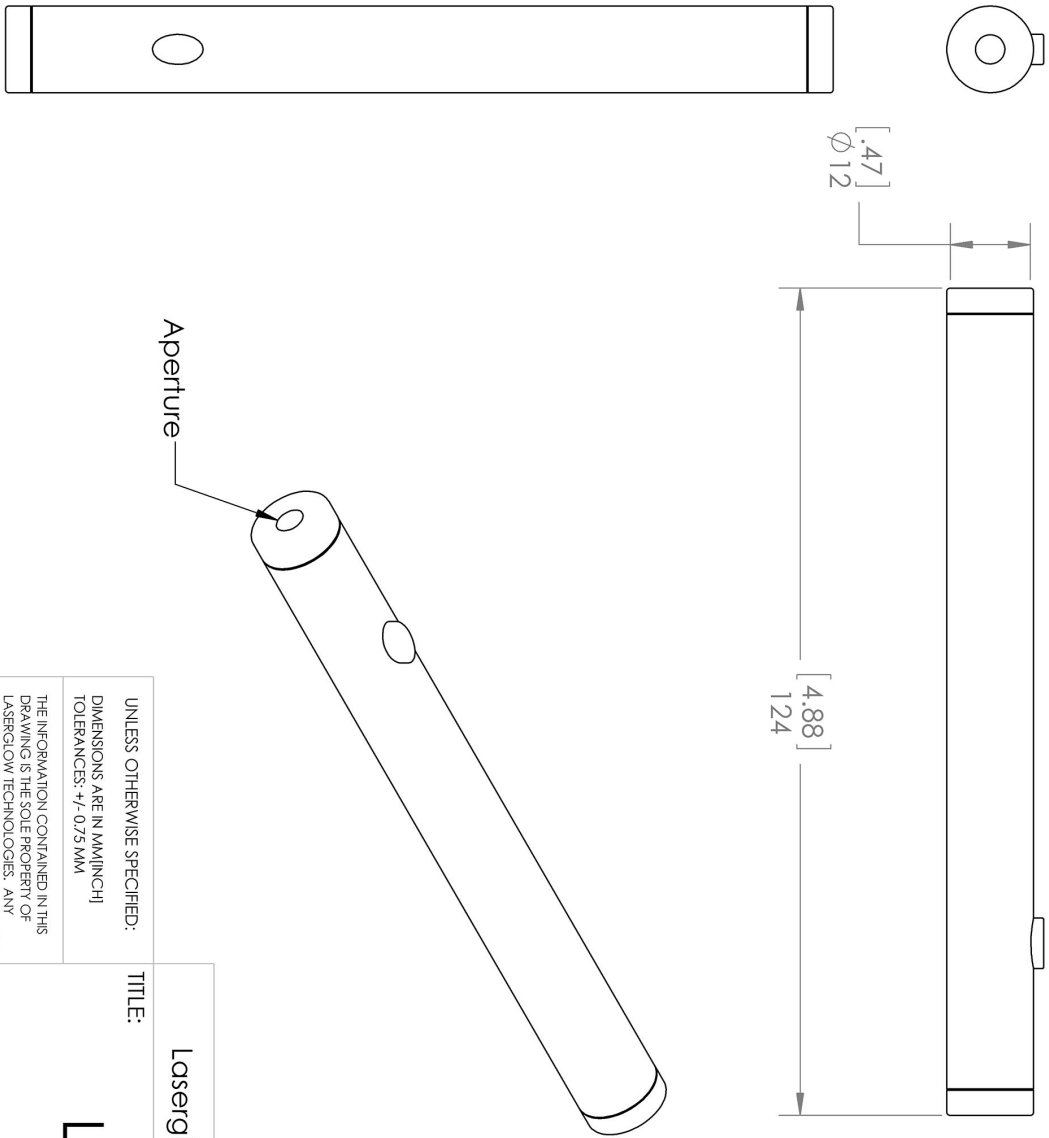
Q-Switched: Specifications are based on the laser pulsing at the specified design frequency. Output characteristics may change if the laser is run at a different frequency.

Regulatory Classification:

The model you have selected (GLI005XXX) requires the following safety label(s):



Dimensional Drawing - Laser Form Factor: GLI:



Aperture


$[.47]$
 $\phi 12$

$[4.88]$
 124

<p>UNLESS OTHERWISE SPECIFIED: DIMENSIONS ARE IN MM(INCH) TOLERANCES: +/- 0.75 MM</p>		<p>TITLE: Laserglow Technologies</p>
<p>THE INFORMATION CONTAINED IN THIS DRAWING IS THE SOLE PROPERTY OF LASERGLLOW TECHNOLOGIES. ANY REPRODUCTION IN PART OR AS A WHOLE WITHOUT THE WRITTEN PERMISSION OF LASERGLLOW TECHNOLOGIES IS PROHIBITED. © 2012 LASERGLLOW.COM LIMITED. ALL RIGHTS RESERVED</p>		<p>REV 1</p>
<p>SCALE: 1:1</p>	<p>SHEET 1 OF 1</p>	<p>Libra</p>

Accessories:

The most popular accessories for model GLI005XXX are shown below. For additional details regarding these or other accessories please see our website or contact us directly.

Part Number	Description	
 ASE001XXX	Engraving On Laser Pointer Max. 2 lines 45 characters each Full Details: www.laserglow.com/ASE	

FOR MORE INFORMATION PLEASE CONTACT:

LASERGLOW TECHNOLOGIES
99 Ingram Dr. Unit B, North York, ON, Canada M6M2L7
Tel. (416) 729-7976 Fax (716) 322-3510
sales@laserglow.com www.laserglow.com

E&OE: Data included in this sheet may be subject to change without notice.

Please confirm critical specifications with our staff prior to ordering.