

## Rigel HV PRO Portable Yellow Laser Module



### Series Specifications:

|                    |        |
|--------------------|--------|
| Nominal Wavelength | 589 nm |
| Output Type        | CW     |
| Laser Source Type  | DPSS   |

### Overview:

The new 589 nm bright yellow laser from Laserglow is noticeably brighter and more "yellow" than the original 593.5 nm Rigel/Vega series yellow lasers. (The 593.5 lasers are often described as "amber-yellow".) This wavelength is closer to the middle of the spectrum, making it brighter to the human eye and more suitable for applications requiring high visibility, long range operation, etc. This is really the brightest and "yellowest" portable yellow laser on the market!

### Key Features:

- **Starting at: \$489**
- **Output Power:** 0.6 mW - 20 mW, varies based on model
- **Expected Life:** 3000-5000 hours
- **Wavelength:** 589 nm (bright yellow)
- **Key Feature:** The brightest and most visible yellow laser on the market!
- **Casing:** Machined Aluminum
- **Package Includes:** Portable laser, aluminum carrying case, instructions/warranty.
- **Safety Info:** Class IIIa/IIIb
- **Duty Cycle:** 30 sec. on/15 sec. off

**U.S. Orders:** Class IIIb versions of this laser cannot be shipped to the United States. If you live in the USA please choose a Class IIIa model, or consider the [589 nm laboratory laser](#) which provides similar output but is not portable. [Click here for more information.](#)

**Canadian Orders:** Class IIIb version of this laser can be shipped within Canada to Canadian companies who provide the following documentation:

- A valid LSO Certificate with a certified Laser Safety Officer on the premises
- A company purchase order
- A signed Declaration of Use. Please contact our sales department for this form

## Specifications:

This spec sheet has been generated specifically for part number GRV-GAQ, per your request, and data for the entire series is also displayed for your reference. The specs which are specific to GRV-GAQ have been highlighted below in **red + bold**.

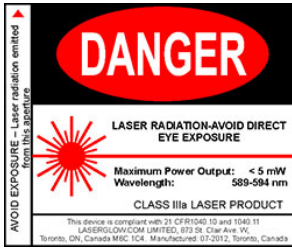
|  |                               |
|--|-------------------------------|
| Laser Form Factor                        | <b>GAQ</b>                    |
| Output Power (mW)                        | <b>&lt;2, &gt;10, &gt;20</b>  |
| FDA Safety Class                         | <b>IIIa, IIIb</b>             |
| Central Wavelength (nm)                  | <b>588.6</b>                  |
| Divergence (mrad, full angle)            | <b>&lt;1.5</b>                |
| Beam Dimensions (mm, 1/e <sup>2</sup> )  | <b>1.5</b>                    |
| Transverse Mode                          | <b>TEM00</b>                  |
| Longitudinal Modes                       | <b>Multiple</b>               |
| Operating Temperature Range (°C)         | <b>15 to 35</b>               |
| Storage Temperature Range (°C)           | <b>-10 to 50</b>              |
| Total Power Consumption (W)              | <b>2, 3, 4</b>                |
| Max. Power Input Duty Cycle              | <b>30 sec. on/15 sec. off</b> |
| Cooling Method                           | <b>Passive Air</b>            |
| Standard Warranty (months)               | <b>6</b>                      |
| MTTF (operational hours)                 | <b>5000</b>                   |
| Weight of Product or Laser Head (kg)     | <b>0.18</b>                   |
| Dimensions of Product or Laser Head (mm) | <b>199 (l) x 23 (d)</b>       |
| Power Supply                             | <b>1 x CR123A Battery</b>     |

CW: All specifications are based on performance at full output power and after the specified warmup period. Output characteristics may change if the laser is run at a different power level.

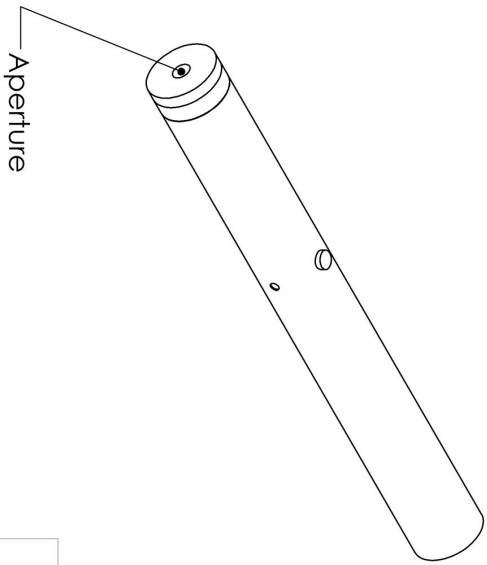
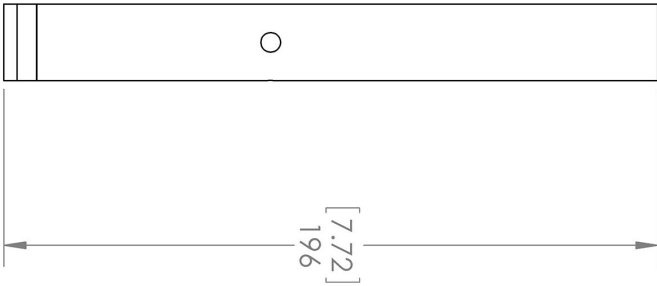
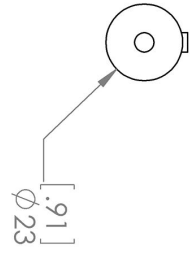
Q-Switched: Specifications are based on the laser pulsing at the specified design frequency. Output characteristics may change if the laser is run at a different frequency.

## Regulatory Classification:

The model you have selected (GRV-GAQ) requires the following safety label(s):



**Dimensional Drawing - Laser Form Factor: GAQ:**






UNLESS OTHERWISE SPECIFIED:  
 DIMENSIONS ARE IN MM(INCH)  
 TOLERANCES: +/- 0.275 MM

THE INFORMATION CONTAINED IN THIS DRAWING IS THE SOLE PROPERTY OF LASERGLOW TECHNOLOGIES. ANY REPRODUCTION IN PART OR AS A WHOLE WITHOUT THE WRITTEN PERMISSION OF LASERGLOW TECHNOLOGIES IS PROHIBITED. © 2012 LASERGLOW.COM LIMITED. ALL RIGHTS RESERVED

|   |              |
|---|--------------|
| TITLE:<br><b>Laserglow Technologies</b>                                     |              |
| Hydra Pro / Aquarius Pro /<br>Electra Pro / Rigel-HV Pro<br>REV<br><b>1</b> |              |
| SCALE: 1:2  | SHEET 1 OF 1 |

**Accessories:**

The most popular accessories for model GRV-GAQ are shown below. For additional details regarding these or other accessories please see our website or contact us directly.

| Part Number   | Description   |                     |
|---|---|---------------------|
| <br>AGF59459X | Optical Density 6<br>Fit over prescription glasses<br>Protect your vision when working with Class IIIb and Class IV green lasers.<br>Full Details: <a href="http://www.laserglow.com/AGF">www.laserglow.com/AGF</a> |                     |
| <br>ACAGAQPXX | Carrying Case-6<br>AquariusPro/ElectraPro/Rigel HVPro/HydraPro<br>Full Details: <a href="http://www.laserglow.com/ACA">www.laserglow.com/ACA</a>  | Included With Laser |
| <br>ASE001XXX | Engraving On Laser Pointer<br>Max. 2 lines 45 characters each<br>Full Details: <a href="http://www.laserglow.com/ASE">www.laserglow.com/ASE</a>   |                     |

**FOR MORE INFORMATION PLEASE CONTACT:**

LASERGLOW TECHNOLOGIES  
873 St. Clair Ave West, Toronto, ON, Canada M6C1C4  
Tel. (416) 729-7976 Fax (480) 247-4864  
[sales@laserglow.com](mailto:sales@laserglow.com) [www.laserglow.com](http://www.laserglow.com)

E&OE: Data included in this sheet may be subject to change without notice.

Please confirm critical specifications with our staff prior to ordering.