

## Scorpius Portable Infrared Laser Module

### Laserglow Part Number: GSC250XXX

#### Similar Products:

For information about the other lasers in this product family visit:

<http://www.laserglow.com/GSC>

#### Ordering:

Order Online Now or Request Quote:

<http://www.laserglow.com/GSC250XXX>



#### Series Specifications:

Nominal Wavelength	1064 nm
Output Type	CW
Laser Source Type	DPSS

#### Overview:

The Scorpius Series, a portable DPSS laser emitting at 1064 nm, produces a completely invisible laser beam. Extreme caution must be used when operating any infrared laser as the human eye will not detect it. Laser safety goggles are included with each Scorpius Series laser. The Scorpius Series is available at up to >700 mW, much greater output power levels than those available in visible-wavelength portable lasers. In addition the price per milliwatt of output power is a fraction of the cost of visible lasers. Ideal for IR laser experimentation including frequency-doubling the 1064 nm output using non-linear crystals such as KTP to produce green laser light at 532 nm.

#### Key Features:

- **Starting at: \$689**
- **Output Power:** 250 mW - 700 mW
- **Casing:** Aluminum, Solid
- **Wavelength:** 1064 nm (Infra-Red, Invisible)
- **Key Feature:** Extremely high power with small beam diameter and divergence.
- **Casing:** Hard Anodized Machined Aluminum
- **Package Includes:** Portable laser, Laser safety goggles, aluminum framed carrying case, instructions/warranty.
- **Warranty:** 6 Month Standard/12 Month Extended
- **Safety Info:** Class IV
- **Duty Cycle:** 100%

**U.S. Orders:** This laser cannot be shipped to the United States. If you live in the USA please consider the [1064 nm laboratory laser](#), which provides similar output but is not portable. [Click here for more information.](#)

**Canadian Orders:** This laser can be shipped within Canada to Canadian companies who provide the following documentation:

- A valid LSO Certificate with a certified Laser Safety Officer on the premises
- A company purchase order
- A signed Declaration of Use. Please contact our sales department for this form

## Specifications:

This spec sheet has been generated specifically for part number GSC250XXX, per your request, and data for the entire series is also displayed for your reference. The specs which are specific to GSC250XXX have been highlighted below in **red + bold**.

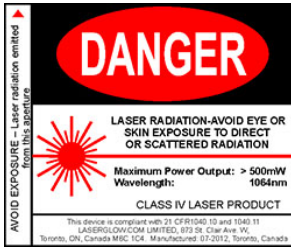
Laser Form Factor	<b>GAR</b>
Output Power (mW)	<b>&gt;250, &gt;600, &gt;700</b>
FDA Safety Class	<b>IV</b>
Central Wavelength (nm)	<b>1063.2</b>
Divergence (mrad, full angle)	<b>&lt;1.8</b>
Beam Dimensions (mm, 1/e <sup>2</sup> )	<b>2</b>
Transverse Mode	<b>TEM00</b>
Longitudinal Modes	<b>Multiple</b>
Warm-up Time (minutes)	<b>1</b>
Approximate Peak Power (W)	<b>400, 700, 800</b>
Operating Temperature Range (°C)	<b>15 to 35</b>
Storage Temperature Range (°C)	<b>-10 to 50</b>
Max. Power Input Duty Cycle	<b>100%</b>
Cooling Method	<b>Passive Air</b>
Standard Warranty (months)	<b>6</b>
MTTF (operational hours)	<b>5000</b>
Weight of Laser Head (kg)	<b>0.3</b>
Laser Head Dimensions (mm)	<b>230 (l) x 38 (d)</b>
Power Supply	<b>2 x C Batteries</b>

CW: All specifications are based on performance at full output power and after the specified warmup period. Output characteristics may change if the laser is run at a different power level.

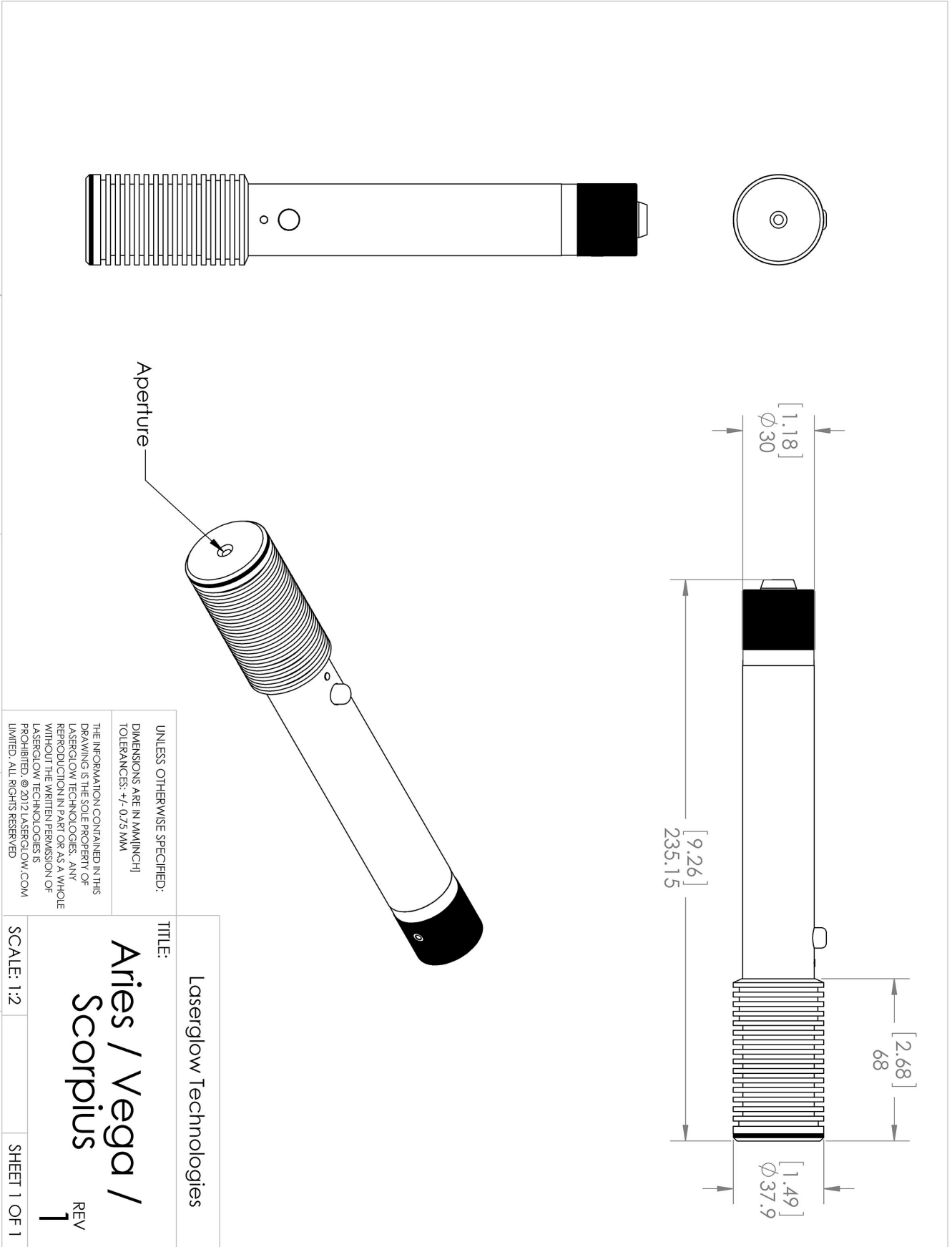
Q-Switched: Specifications are based on the laser pulsing at the specified design frequency. Output characteristics may change if the laser is run at a different frequency.

## Regulatory Classification:

The model you have selected (GSC250XXX) requires the following safety label(s):




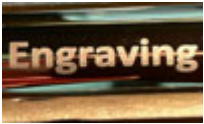


**Dimensional Drawing - Laser Form Factor: GAR:**



**Accessories:**

The most popular accessories for model GSC250XXX are shown below. For additional details regarding these or other accessories please see our website or contact us directly.

Part Number	Description	
 AGFA647XX	LSG-1064-NF-7 Fit-Over Safety Goggles 1064nm Output: OD 7+ at 950-1070 nm CE Certified Full Details: <a href="http://www.laserglow.com/AGF">www.laserglow.com/AGF</a>	Included With Laser
 AGM00AXXX	Aries GlowMount Tripod Adaptor Full Details: <a href="http://www.laserglow.com/AGM">www.laserglow.com/AGM</a>	
 ACAGAR1XX	Carrying Case-3 Aries/Scorp/Scorp-D/Orion/OrionHV/Vega/Polaris - Small Full Details: <a href="http://www.laserglow.com/ACA">www.laserglow.com/ACA</a>	Included With Laser
 ASE001XXX	Engraving On Laser Pointer Max. 2 lines 45 characters each Full Details: <a href="http://www.laserglow.com/ASE">www.laserglow.com/ASE</a>	

**FOR MORE INFORMATION PLEASE CONTACT:**

LASERGLOW TECHNOLOGIES  
 873 St. Clair Ave West, Toronto, ON, Canada M6C1C4  
 Tel. (416) 729-7976 Fax (480) 247-4864  
[sales@laserglow.com](mailto:sales@laserglow.com) [www.laserglow.com](http://www.laserglow.com)

E&OE: Data included in this sheet may be subject to change without notice.  
 Please confirm critical specifications with our staff prior to ordering.