

## Laserglow Product Datasheet

### Vega Portable Yellow Laser Module

#### Laserglow Part Number: GVE005XXX



This model is listed as **inactive** in our product database. Stock may be limited, and availability is subject to change without notice.

#### Similar Products:

For information about the other lasers in this product family visit:

<http://www.laserglow.com/GVE>

#### Ordering:

Order Online Now or Request Quote:

<http://www.laserglow.com/GVE005XXX>



#### Series Specifications:

Nominal Wavelength	593.5 nm
Output Type	CW
Laser Source Type	DPSS

#### Overview:

Laserglow's Vega Series yellow portable laser uses advanced solid-state sum-frequency-generation technology miniaturized into a 593.5 nm portable laser. The Vega is truly a technological marvel allowing the portability of a battery-operated laser in a wavelength previously only available in bench-top lab lasers.

#### Key Features:

- **Starting at: \$799**
- **Output Power:** 2 mW - 10 mW
- **Wavelength:** 593.5 nm (yellow)
- **Key Feature:** Portable, battery powered at 593.5 nm
- **Casing:** Hard Anodized Machined Aluminum
- **Package Includes:** Portable laser, aluminum frame carrying case, instructions/warranty.
- **Warranty:** 6 Month Standard/12 Month Extended
- **Duty Cycle:** 5 min. on/1 min. off

**U.S. Orders:** This laser cannot be shipped to the United States. If you live in the USA please consider the [Rigel laser](#) which has simple push-button operation and is Class IIIa compliant. If you require high power, then you may also consider the [593.5 nm laboratory laser](#), which provides similar output but is not portable. [Click here for more information.](#)

**Canadian Orders:** This laser can be shipped within Canada to Canadian companies who provide the following documentation:

- A valid LSO Certificate with a certified Laser Safety Officer on the premises
- A company purchase order
- A signed Declaration of Use. Please contact our sales department for this form

## Specifications:

This spec sheet has been generated specifically for part number GVE005XXX, per your request, and data for the entire series is also displayed for your reference. The specs which are specific to GVE005XXX have been highlighted below in **red + bold**.

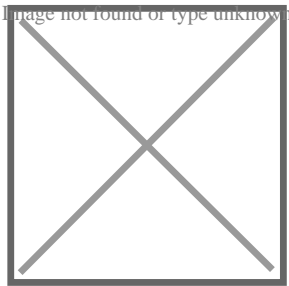
Output Power (mW)	<b>&gt;5</b>
Central Wavelength (nm)	<b>593.5</b>
Divergence (mrad, full angle)	<b>&lt;1.5</b>
Beam Dimensions (mm, 1/e <sup>2</sup> )	<b>4</b>
Warm-up Time (minutes)	<b>1</b>
Approximate Peak Power (W)	<b>12</b>
Operating Temperature Range (°C)	<b>15 to 35</b>
Total Power Consumption (W)	<b>4</b>
Max. Power Input Duty Cycle	<b>5 min. on/1 min. off</b>
Standard Warranty (months)	<b>6</b>
MTTF (operational hours)	<b>5000</b>
Weight of Product or Laser Head (kg)	<b>0.3</b>
Dimensions of Product or Laser Head (mm)	<b>230 (l) x 38 (d)</b>
Power Supply	<b>2 x C Batteries</b>

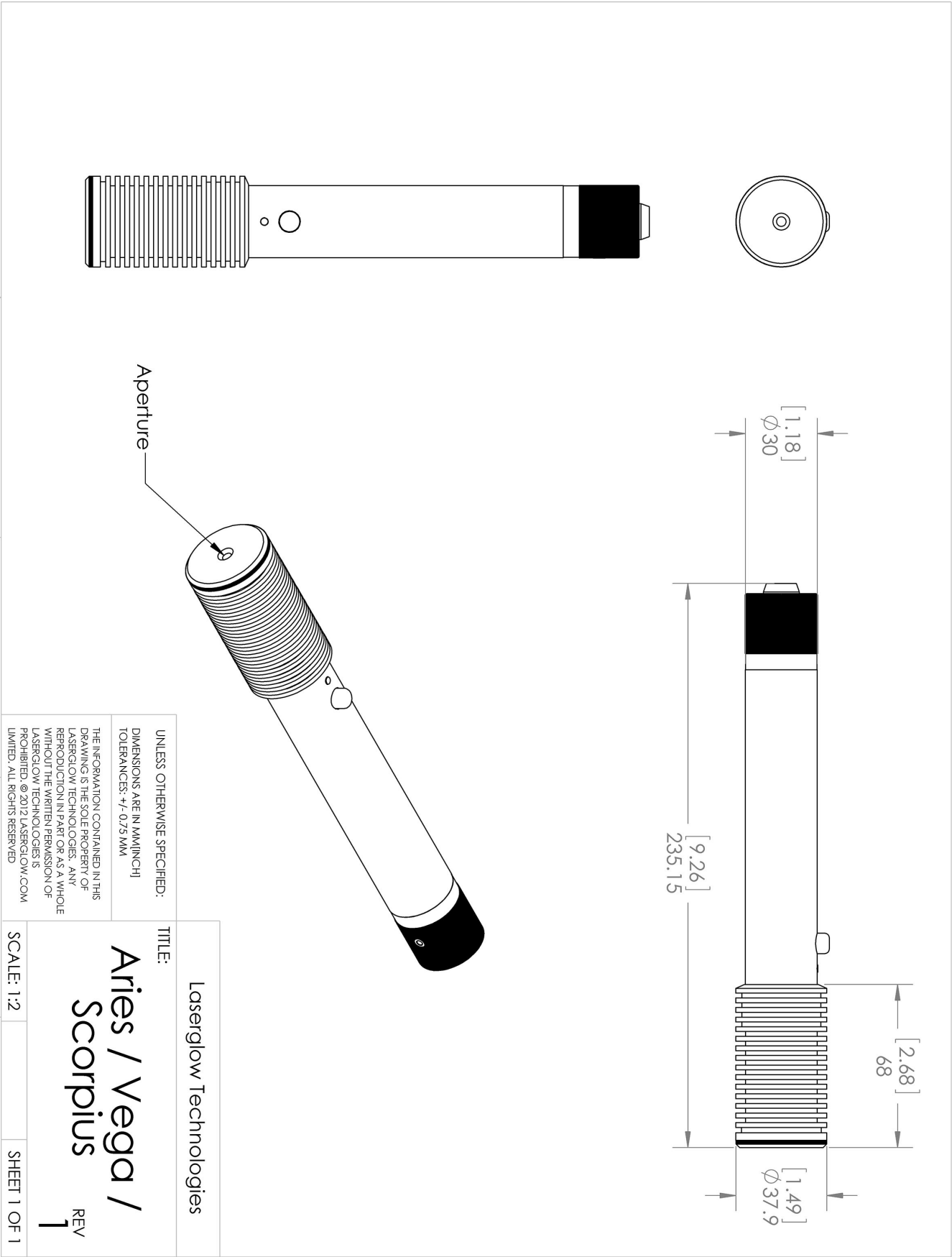
CW: All specifications are based on performance at full output power and after the specified warmup period. Output characteristics may change if the laser is run at a different power level.

Q-Switched: Specifications are based on the laser pulsing at the specified design frequency. Output characteristics may change if the laser is run at a different frequency.

**Regulatory Classification:**




The model you have selected (GVE005XXX) requires the following safety label(s):





## Accessories:

The most popular accessories for model GVE005XXX are shown below. For additional details regarding these or other accessories please see our website or contact us directly.

Part Number	Description	
 AGM00AXXX	Aries GlowMount Tripod Adaptor Full Details: <a href="http://www.laserglow.com/AGM">www.laserglow.com/AGM</a>	
 AGF59459X	Optical Density 6 Fit over prescription glasses Protect your vision when working with Class IIIb and Class IV green lasers. Full Details: <a href="http://www.laserglow.com/AGF">www.laserglow.com/AGF</a>	
 ACAGAR1XX	Carrying Case-3 Aries/Scorp/Scorp-D/Orion/OrionHV/Vega/Polaris - Small Full Details: <a href="http://www.laserglow.com/ACA">www.laserglow.com/ACA</a>	Included With Laser

## FOR MORE INFORMATION PLEASE CONTACT:

LASERGLOW TECHNOLOGIES  
99 Ingram Dr. Unit B, North York, ON, Canada M6M2L7  
Tel. (416) 729-7976 Fax (716) 322-3510  
[sales@laserglow.com](mailto:sales@laserglow.com) [www.laserglow.com](http://www.laserglow.com)

E&OE: Data included in this sheet may be subject to change without notice.

Please confirm critical specifications with our staff prior to ordering.