

Laserglow Product Datasheet

LQS-0355 Passively Q-Switched Laser System

Laserglow Part Number:
Q350105SX



Similar Products:

For information about the other lasers in this product family visit:

<http://www.laserglow.com/Q35>

Ordering:

Order Online Now or Request Quote:

<http://www.laserglow.com/Q350105SX>



Series Specifications:

Nominal Wavelength	355 nm
Output Type	Q-Switched
Laser Source Type	DPSS

Overview:

The LQS-0355 Series of Diode-Pumped Solid-State (DPSS) Q-Switched Lasers are ideal for applications requiring a short wavelength or high photon energy.

These lasers are commonly used for fluorescence excitation, Raman spectroscopy, material processing, and a broad range of other applications. The driver is available as a plug-and-play benchtop system or an O.E.M. component designed for system integration.

Key Features:

- Pulse energy available from 1 μ J - 10 μ J
- Pulse repetition rate of 1 kHz - 4 kHz
- Pulse duration around 7 ns
- Air cooled
- Runs on standard AC power (85 - 264 V, 47 - 63 Hz)
- 5,000 hour maintenance-free operating life (Expected)
- FDA/CDRH compliant Class IV enclosure

Package Includes:

- Laser Head
- Driver/Power Supply
- Power Cable
- BNC Connector (LabSpec models only)
- Keys, Safety Interlock
- Hard-shell Carrying Case

Specifications:

This spec sheet has been generated specifically for part number Q350105SX, per your request, and data for the entire series is also displayed for your reference. The specs which are specific to Q350105SX have been highlighted below in **red + bold**.

Output Power (mW)	>4, >12, >20, >40
Single Pulse Energy (μJ)	1, 3, 5, 10
Optimal Pulse Frequency (Hz)	4000
Output Power Stability (%RMS/4h)	<3, <5 , <10
Central Wavelength (nm)	355.1
Wavelength Tolerance (+/- nm)	1
Divergence (mrad, full angle)	<1.5
Beam Dimensions (mm, 1/e ²)	2
Warm-up Time (minutes)	10
Avg. Pulse Duration (ns)	7
Approximate Peak Power (W)	2000
Optical Noise Amplitude (%RMS @ 20 Hz - 20 MHz)	<20
Spectral Linewidth (nm)	<0.3
Polarization Ratio	>100
Beam Pointing Stability (mrad)	<0.05
Operating Temperature Range (°C)	10 to 35
Max. TTL Modulation Freq. (Hz)	20000
Minimum Pulsing Frequency (Hz)	1000
Modulation Input Signal	0-5 VDC
Total Power Consumption (W)	70
Max. Power Input Duty Cycle	100%
Standard Warranty (months)	12
MTTF (operational hours)	5000
Weight of Product or Laser Head (kg)	1.6
Beam Height from Base Plate (mm)	45

CW: All specifications are based on performance at full output power and after the specified warmup period. Output characteristics may change if the laser is run at a different power level.

Q-Switched: Specifications are based on the laser pulsing at the specified design frequency. Output characteristics may change if the laser is run at a different frequency.

Specifications Page 2:

This spec sheet has been generated specifically for part number Q350105SX, per your request, and data for the entire series is also displayed for your reference. The specs which are specific to Q350105SX have been highlighted below in **red + bold**.


Laser Form Factor	
Dimensions of Product or Laser Head (mm)	211.5 (l) x 88 (w) x 74 (h)

CW: All specifications are based on performance at full output power and after the specified warmup period. Output characteristics may change if the laser is run at a different power level.

Q-Switched: Specifications are based on the laser pulsing at the specified design frequency. Output characteristics may change if the laser is run at a different frequency.

Power Supply Options:

These lasers are available with several different power supply options. The model that you have selected is highlighted below, and any other options are shown for easy reference.

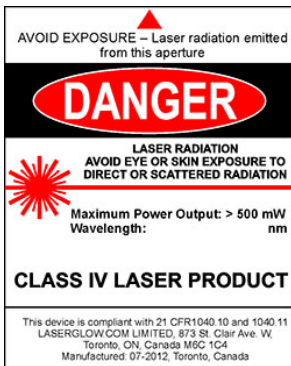
	Power Supply Type:	SF	SN
	Input Power	85v to 264v	85v to 264v
	Power Supply Weight (kg)	2.3	2.3
	Dimensions (mm)	238 (l) x 146 (w) x 102 (h)	238 (l) x 146 (w) x 102 (h)

*Power supply may not be exactly as shown, see dimensional drawings on next 2 pages.

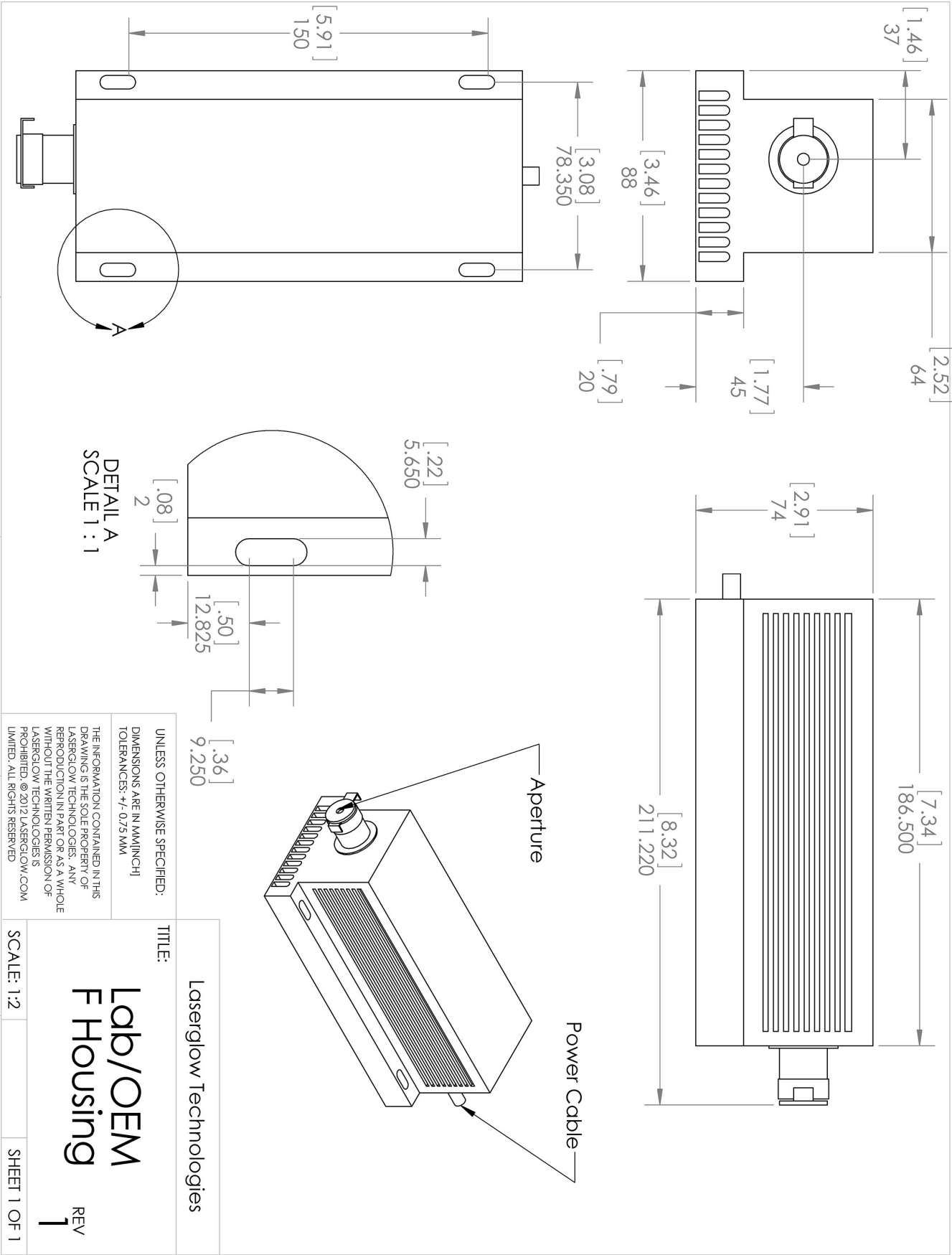
*Dimensions for fiber-integrated (I_) include laser head packaged inside.

Regulatory Classification:

The model you have selected (Q350105SX) requires the following safety label(s):



Dimensional Drawing - Laser Form Factor: F:









Dimensional Drawing - Power Supply Form Factor: SF:



Accessories:

The most popular accessories for model Q350105SX are shown below. For additional details regarding these or other accessories please see our website or contact us directly.

Part Number	Description	
 AGF5327XX	LSG-532-NF-7 Fit-Over Safety Goggles 532nm Output: OD 7+ at 190-532 nm CE Certified Full Details: www.laserglow.com/AGF	
 AFS2002XX	Armored Fiber With SMA 905 Connectors 200um Core Multimode 2 m length Full Details: www.laserglow.com/AFS	
 AFF2002XX	Armored Fiber With FC/PC Connectors 200um Core Multimode 2m length Full Details: www.laserglow.com/AFF	
 ACFUV1HXX	FC/PC Fiber Coupler/Collimator for ultraviolet wavelengths (266 to 399 nm) 11mm diameter input lens Full Details: www.laserglow.com/ACF	
 ACSUV1HXX	SMA Fiber Coupler/Collimator for ultraviolet wavelengths (266 to 399 nm) 11mm diameter input lens Full Details: www.laserglow.com/ACS	
 ACALBHFX	Carrying Case-103 Holds Lab/OEM H, F and O size Standard/LabSpec laser Full Details: www.laserglow.com/ACA	Included With Laser

FOR MORE INFORMATION PLEASE CONTACT:

LASERGLOW TECHNOLOGIES
99 Ingram Dr. Unit B, North York, ON, Canada M6M2L7
Tel. (416) 729-7976 Fax (716) 322-3510
sales@laserglow.com www.laserglow.com

E&OE: Data included in this sheet may be subject to change without notice.

Please confirm critical specifications with our staff prior to ordering.